

Borumba Pumped Hydro Project

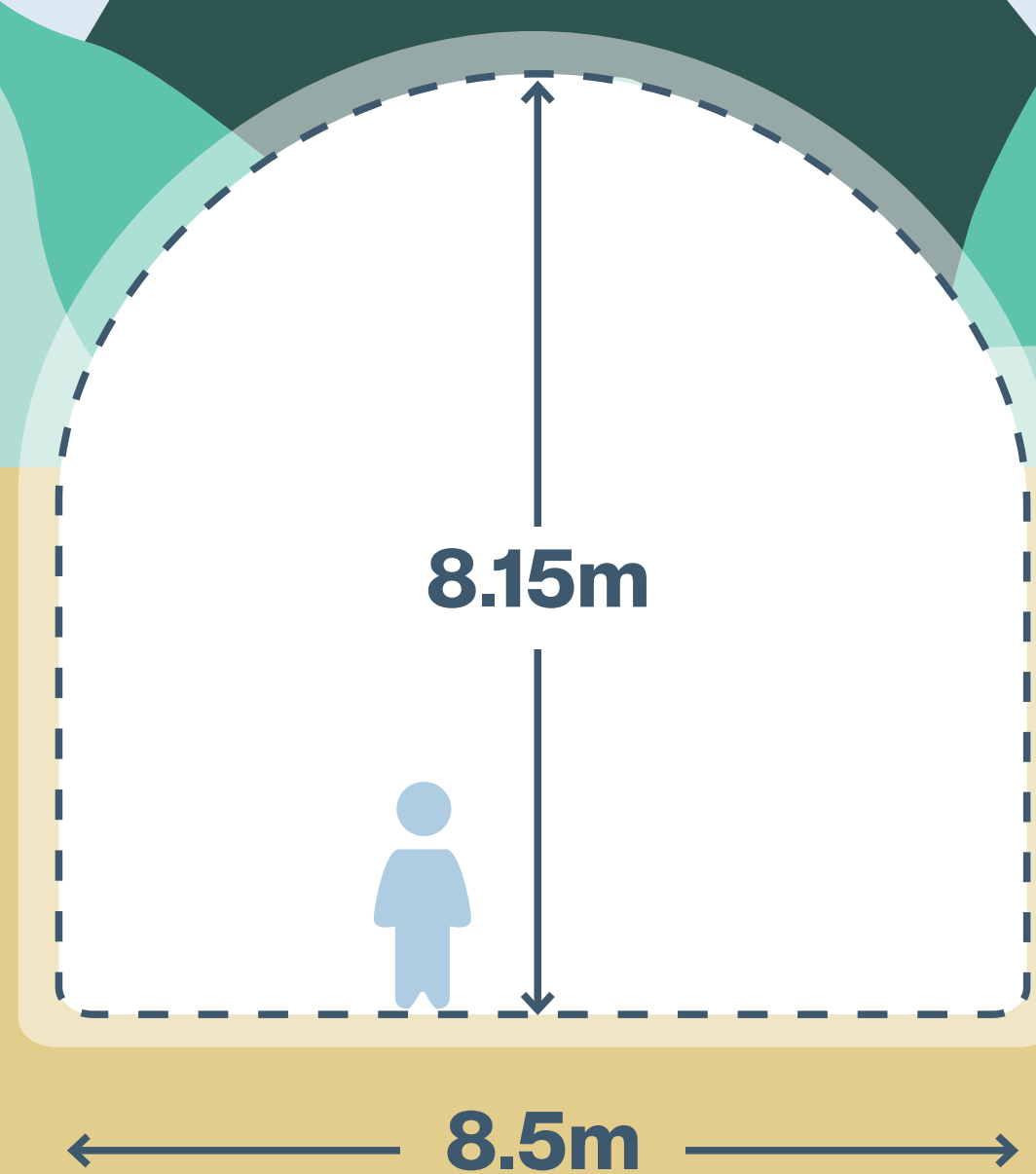
Exploratory works – Tunnel drilling

Exploratory tunnel drilling

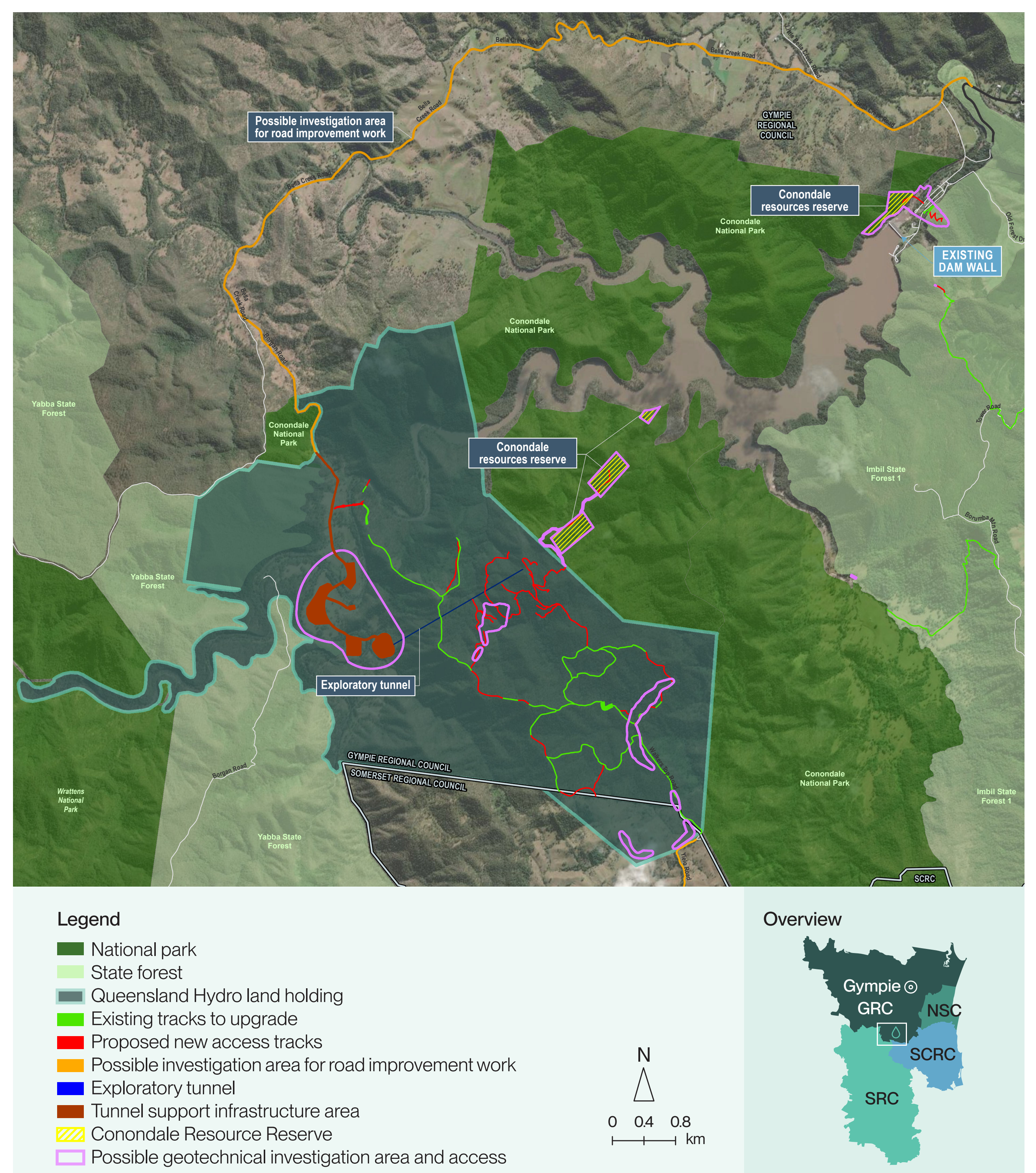
Queensland Hydro is carrying out drilling as part of the exploratory works from late 2023 to 2025. The exploratory drilling work will happen concurrently with the Project's environmental studies and approvals processes.

Our program of exploratory drilling will:

- Help to increase our understanding of ground conditions and inform the project design.
- Include excavating soil and rock in a D-shaped shaft to allow drilling equipment to access the proposed underground powerhouse cavern.
- Use blast and drilling methods to remove spoil.
- Complement surface geotechnical investigations.
- Be repurposed to and become the permanent cable tunnel. (Pending approvals)



Indicative dimensions of the exploratory tunnel



Indicative locations of exploratory works, subject to approvals. Workers camps are also likely to be required during exploratory works. Further information on the location of camp/s will be shared when available.

Geotechnical investigations

Our program of geotechnical investigations will:

- Help identify soil and rock types and subsurface conditions in and around the project area.
- Establish water monitoring bores in the project area, including around Borumba Dam.
- Involve a team of workers spending about one week working at each borehole site.

Potential impacts to nearby residents may include increased truck movements along public roads and noise from drilling works.



To find out more

To find out more information scan the QR code or visit qldhydro.com.au