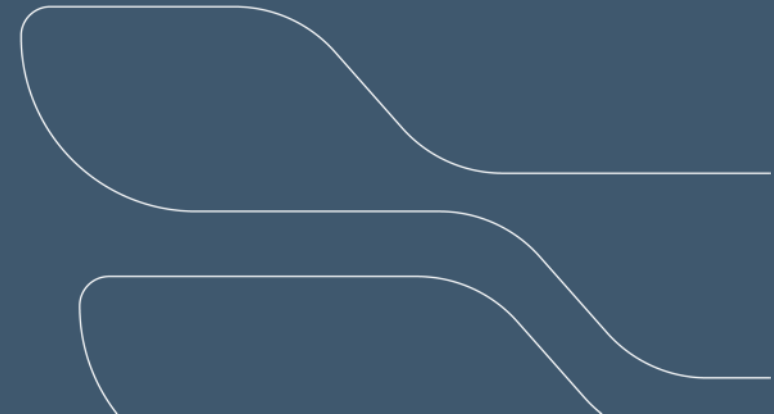


Borumba Pumped Hydro Project

Stakeholder Reference Group meeting

7 SEPTEMBER 2023



Acknowledgement of Country

In the spirit of reconciliation, Queensland Hydro acknowledges the Traditional Custodians of Country throughout Queensland and, in particular the lands, skies and waters on which we operate. We celebrate the diversity of Aboriginal peoples and their ongoing cultures and connections to the lands, skies and waters of Queensland.

Queensland Hydro pays respect to Elders past and present honouring their continuing spiritual and cultural connections to Country.

Agenda

1

**Introductions
and
housekeeping**

2

**Project
update**

3

Morning Tea

4

**Planning and
approvals
update**

5

**Stakeholder
engagement
update**

6

**Wrap up
Next steps**

Introductions and housekeeping

Introductions and housekeeping

- Introductions
- Terms of Reference (TOR)
 - Reminder of the 'rules of engagement'
 - act with honesty, good faith, and integrity
 - represent the interest of their group / organisation rather than individual interests or issues
 - respect that the role of members is to provide insight and advice
 - maintain confidentiality of discussions within the meeting
 - be respectful to fellow participants and not engage in unconstructive, intimidating or disorderly behaviour
 - treat all participants with respect and courtesy and follow good meeting practices

Borumba Project Update

Exploratory Works

What are the “Exploratory “Works”?”

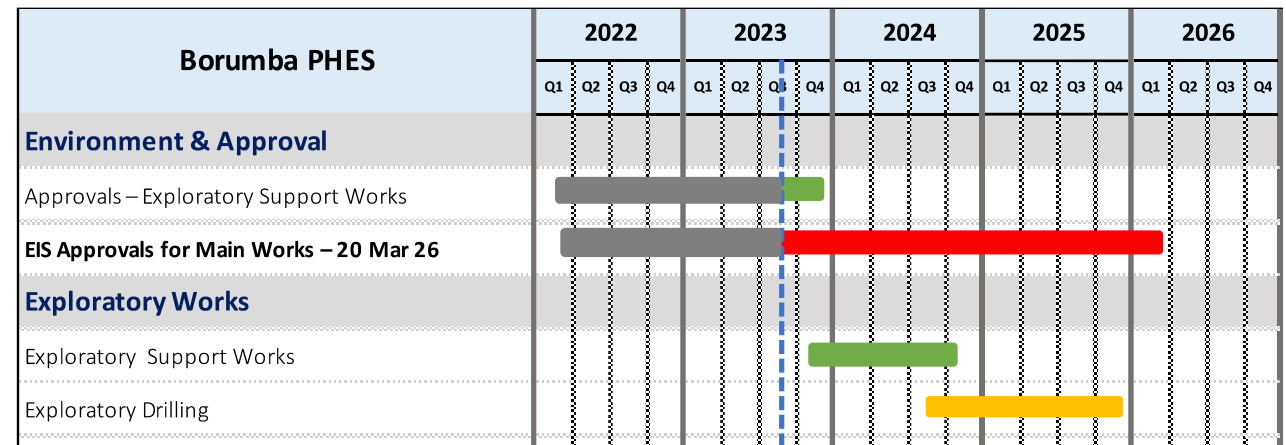
1. Detailed geological investigations:
 - vertical boreholes and water monitoring bores
 - horizontal shaft to the proposed powerhouse cavern
2. Supporting works:
 - Temporary worker camps
 - Targeted access road improvements
 - New access roads and tracks throughout the project site
 - Temporary water supply infrastructure
3. EIS field investigations



Exploratory Works commencement and program

Exploratory works commenced in July, with initial borehole drilling approvals.
 Exploratory works continue until late 2025.

Support Works	Construction timeframe
Initial Geotech Drilling	Jul-23 to Dec-23
Walkers Top Rd - initial	Oct-23 to Nov-23
Bella Ck Rd – initial (GRC)	Nov-23 to Dec-23
Yielo Rd – initial (SRC)	Feb-24 to Mar-24
Temp Camps	Mar-24 to Sept-24
Temp Water	Mar-24 to May-24
Internal Roads & Bridges	Apr-24 to Oct-24
Internal BH Tracks	Apr-24 to Oct-24
Geotechnical Drilling	Jan-24 to Dec-25
Exploratory Drilling	Oct-24 to Dec-25



Red: Critical Path Activity Yellow: Near Critical Path Activity Green: Not on Critical Path

Initial Geotechnical Investigations

Initial geotechnical drilling consist of ~45 boreholes varying from 20m to 150m, in pre-disturbed locations which do not require state or federal environmental approvals.

Environmental and cultural heritage clearances still performed.

- ~25 water monitoring bores – required for groundwater monitoring as part of EIS
- ~20 geotechnical bores – required for design of structural elements (EG. bridge foundations)

Main geotechnical drilling program to occur following Exploratory Works approvals

- ~5,500 lin m of deep borehole drilling (ave 450m per hole)
- ~10,000 lin m of shallow borehole drilling (ave 65m per hole)

Available and upcoming tenders

Works Type	Package Scope	Approx Tender Timing
Temporary Accommodation	Temporary Accommodation Camps	Sept-23
Civil Construction Works	Council Road Improvements x2	Sept-23, Nov-23
	Internal Track Improvements	Sept-23
	Supply of Steel Bridge components	Sept-23 to Oct-23
	Internal Earthworks, Roadworks & Bridges	Sept-23 to Dec-23
	Temporary Water Infrastructure	Sept-23 to Nov-23
Underground Works	Exploratory Drilling	Sept-23 to Apr-24
	Technical & Management Services	Oct-23 to Dec-23
Geotechnical Works	Geotechnical Drilling	Oct-23 to Nov-23
	Technical & Management Services	Nov-23 to Dec-23
Surveying	Establishment of Survey Control Network	Oct-23
Site Field Services	Vegetation Management	Sept-23
	Water Haulage	Feb-24
	Stock Fencing	Feb-24

Tender Evaluation Criteria

Procurement in line with Queensland Government Procurement Policy (QPP) and Best Practice Principles (BPP):

Best practice commitment to apprentices and trainees

A demonstrated history of and commitment to training, including the engagement of apprentices and trainees including, but not limited to:

- specific training and development plans that will be provided in relation to the work.
- other practices or programs used to improve opportunities for apprentices and trainees, including training and advancement.

Local Benefits

Benefits delivered to the local region by the Proponent through use of local and Indigenous resources in delivering the scope of work.

Tenders evaluated on price and non-price criteria.

Imbil Project Office

- Queensland Hydro has entered into an agreement to lease the property at 6 Imbil Island Road
- The office location will provide Queensland Hydro workers the opportunity to be located within proximity to the project site, and provide a community drop-in information center.
- Queensland Hydro are currently investigating opportunities to re-establish a health service and co-locate at the premises.
- Fit out of the building will commence in the coming weeks.



Planning and approvals process

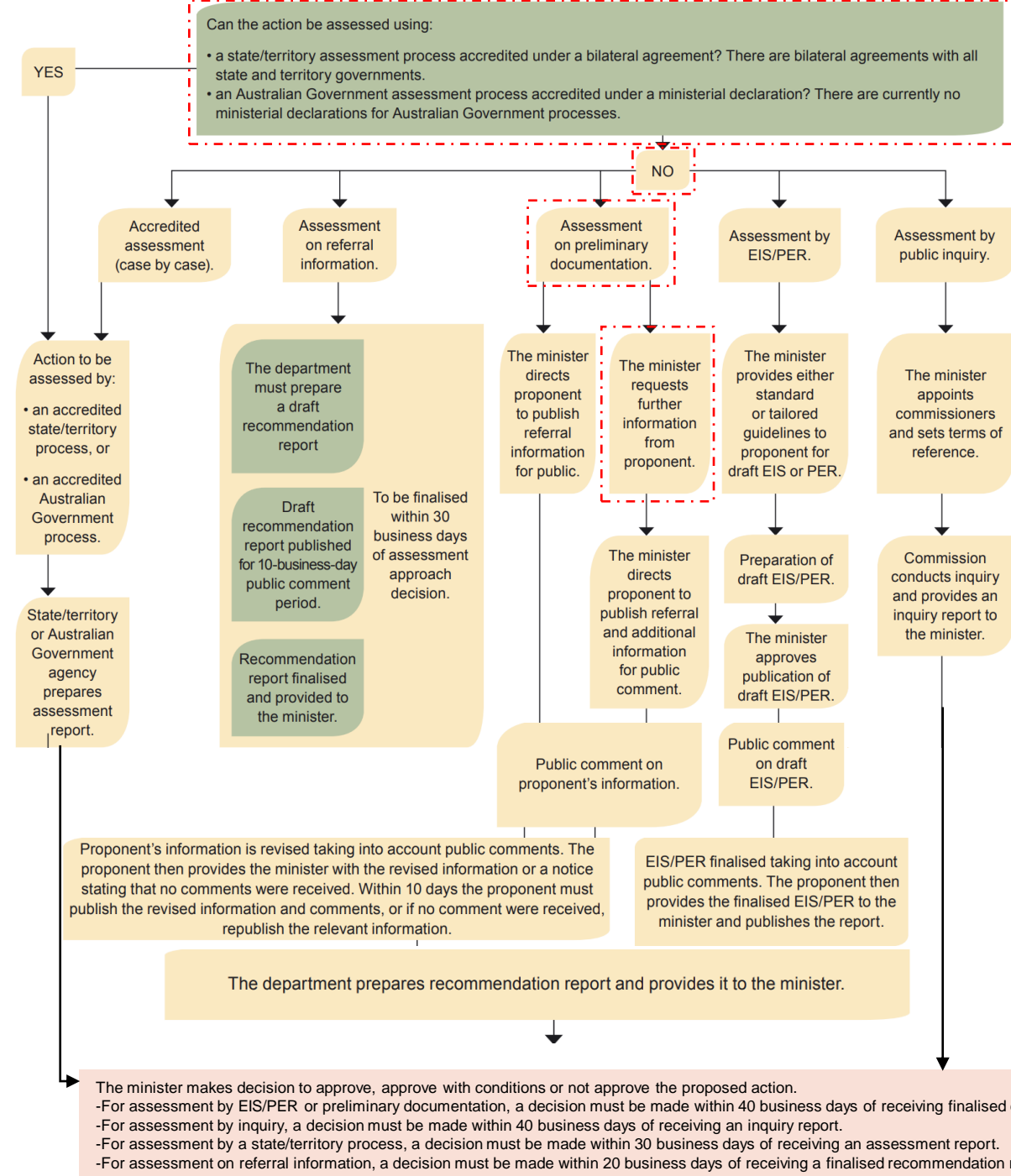
Target project schedule



Exploratory works approvals update

EPBC Act assessment

- Controlled action - 2023/09461
- Assessment via preliminary documentation
- Decision whether to approve post public consultation

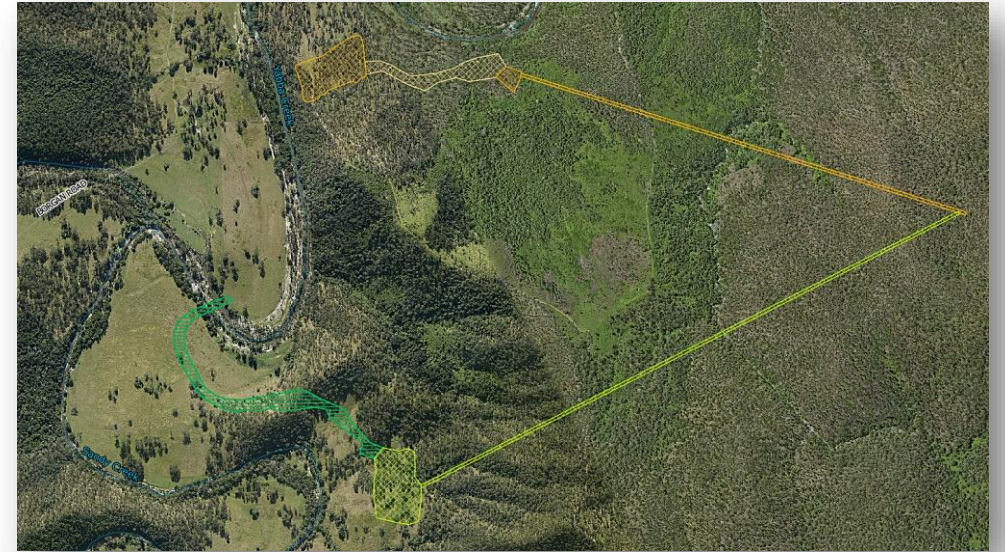


Exploratory works approvals update

Project changes

- Avoid and minimise hierarchy applied
 - Exploratory drilling and associated portal and operating pad shifted to cleared areas
 - Spoil areas located in cleared areas
 - Use existing access tracks

- Reduced the extent of clearing works within
 - remnant vegetation
 - sensitive areas
 - habitat for threatened species
 - Lowland Rainforest of Subtropical Australia



Exploratory works approvals update

EPBC potential impact assessment

- No change to the species likely to be significantly impacted by the Project
 - *Thesium australe*, koala, greater glider, grey-headed flying-fox, long-nosed potoroo, spotted-tail quoll, glossy-black cockatoo
 - Lowland Rainforest of Subtropical Australia
 - Offsets are required and an updated strategy to be submitted
- Informed by additional ecological surveys
 - Verify presence and extent of threatened ecological communities
 - Verify presence and extent of habitat for MNES
 - Presence of weeds (Giant rats tail grass common to abundant in the grasslands around Yabba Creek and Sandy Creek confluence)
 - Subtropical eucalypt floodplain forest and woodland of the New South Wales North Coast and South East Queensland bioregions is now affected but a significant residual impact is not expected



Exploratory works approvals update

Mitigation measures

- Referral included various management plans, such as Flora and Fauna Management Plan, Spoil Management Plan etc.
- Monitoring works being developed which informs the Exploratory Works and where applicable the EIS process
 - water quality
 - air quality/dust
 - noise and vibration

Ongoing activities

- Continue to secure the relevant state approvals to support the works
- Cultural heritage surveys and presence of monitors during the works
- Pre-clearance surveys
- Contaminated land assessment (i.e. targeting land parcels on the environmental management register)

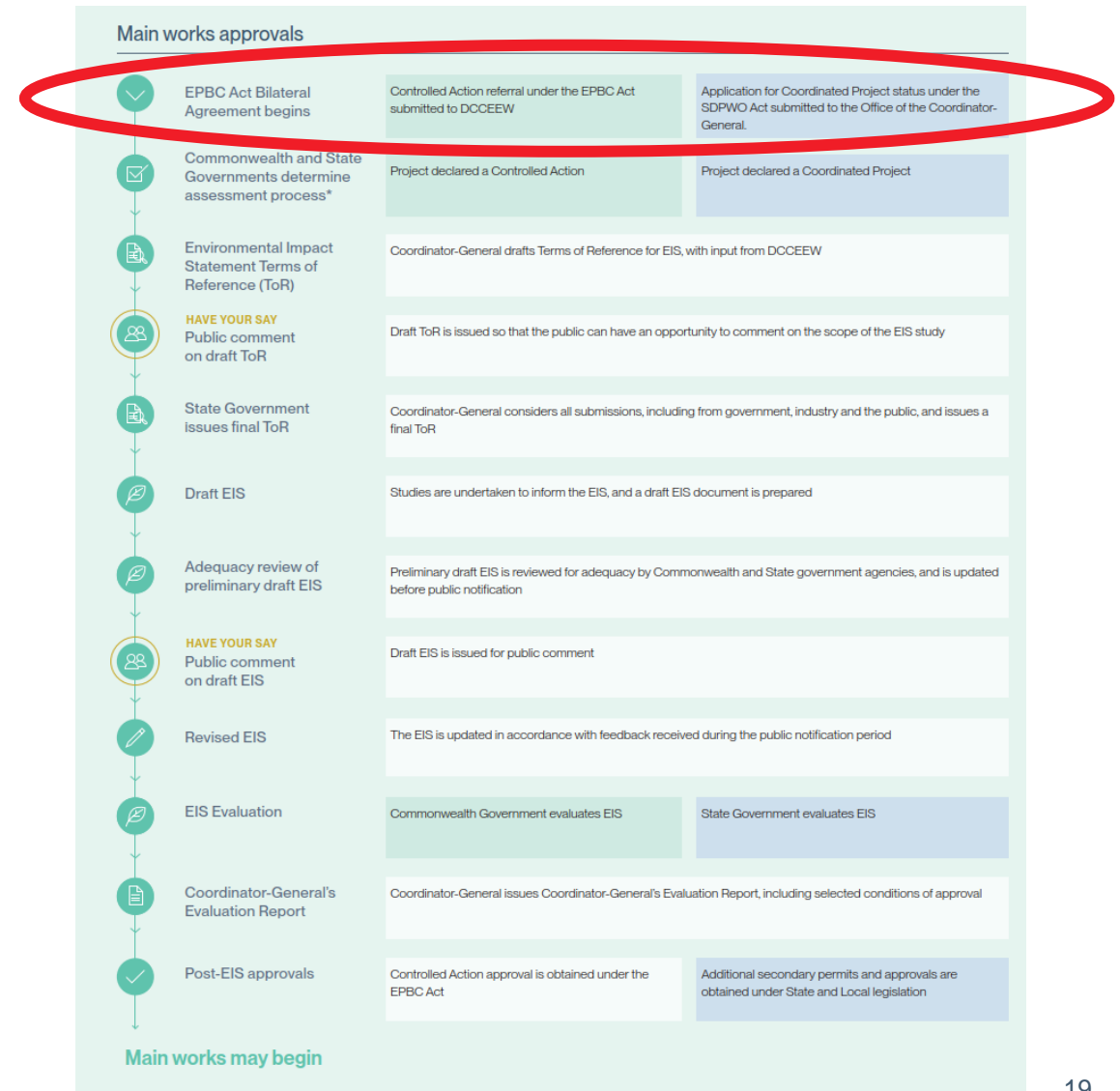


Approvals for Main Works

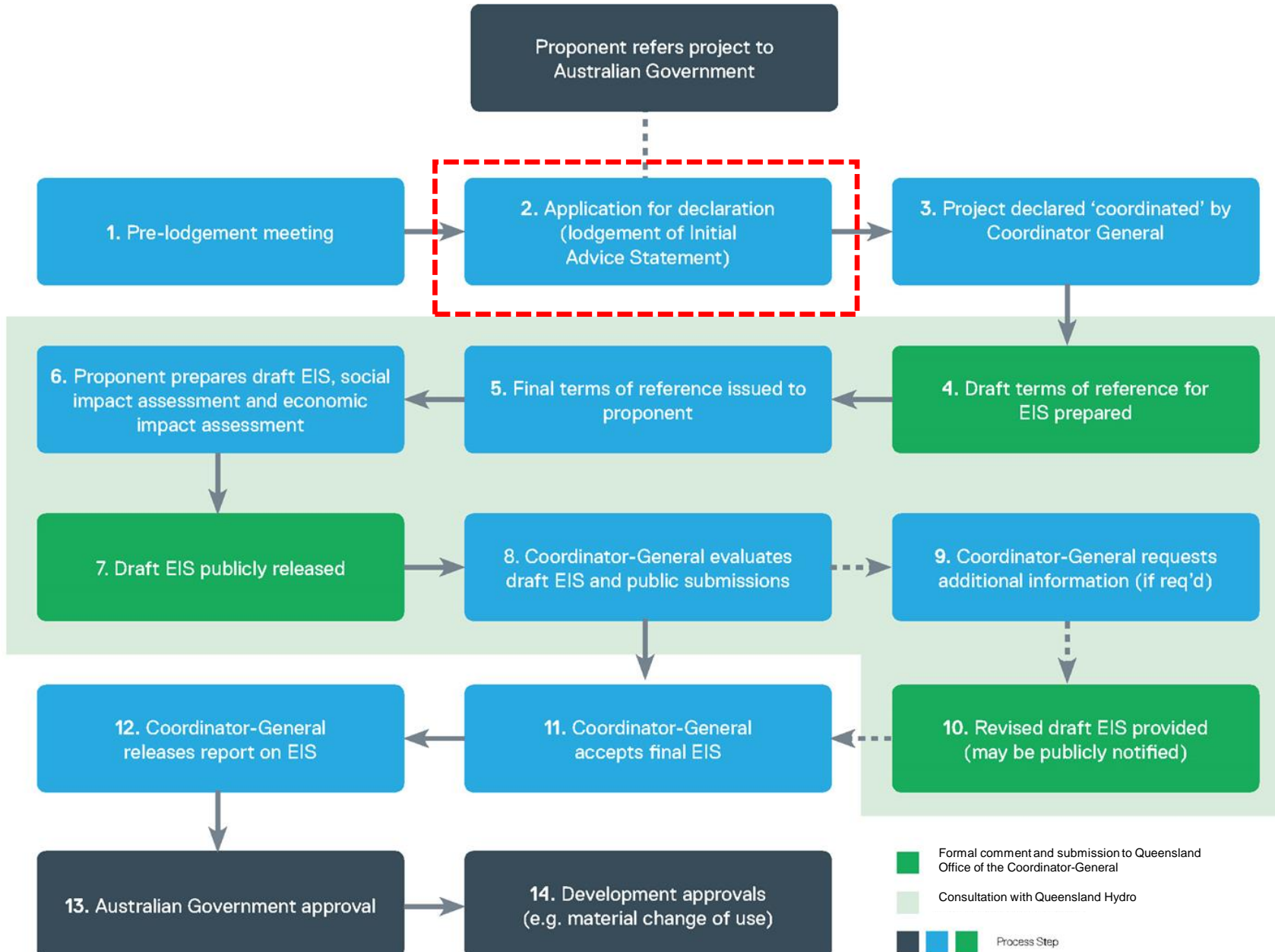
Project footprint and description defined for the purposes of the following documentation

- Coordinated project application (including an Initial Advice Statement (IAS)) submitted to the Office of the Coordinator-General
- EPBC Act Referral to be submitted to the Commonwealth Minister for the Environment (via Department of Climate Change, Energy, the Environment and Water (DCCEE))

Public comment on the Environmental Impact Statement Terms of Reference is expected Q4, 2023.



Main Works Approval Pathway



Main Works Approval Pathway

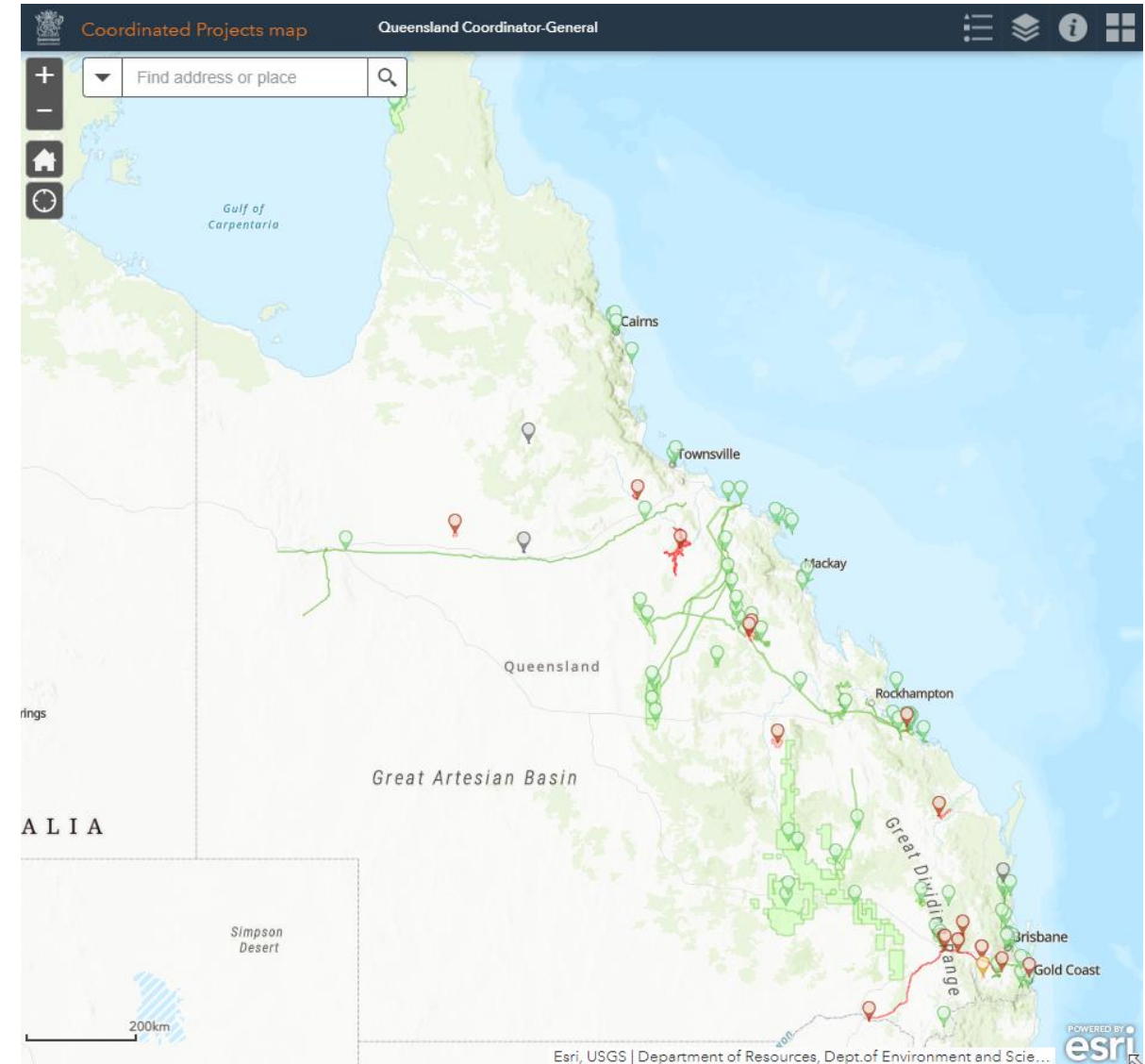
Big-T Pumped Hydropower Energy Storage project

Project overview*

EIS status	EIS active
Description	Development of a pumped hydropower energy storage project in the Southern Queensland renewable energy zone with the capacity to generate up to 400 megawatts (MW) of continuous electricity for 10 hours per day, and a battery energy storage system with a capacity of 200 megawatt hours (MWh)
Proponent	BE Power Projects Pty Ltd as Trustee for Big-T Unit Trust
Location/s	Approximately 45 km north-east of Toowoomba. Map
Local government/s	Toowoomba Regional Council and Somerset Regional Council
Investment	Up to \$1.3 billion
Key features	<ul style="list-style-type: none">• new upper reservoir located on Mt Sevastopol• underground water conveyances and intake/outlet infrastructure connecting the water conveyances between the upper reservoir and existing Lake Cressbrook (lower reservoir)• underground power station cavern, housing two 200 megawatt reversible turbines and access tunnel• 15 km underground double-circuit 275 kilovolt transmission line and a new switching station• evacuation and ventilation tunnel• upgrade of Sebastapol and Three Mile Roads and new 3 km access road to the tunnel portals and lower intake• a battery energy storage system

Environmental impact statement (EIS) process

Date	Activity
Currently	Draft EIS being prepared by proponent.
20 April 2023	Terms of reference for an EIS (📎 1.7 MB)
21 January 2023 to 22 February 2023	Draft terms of reference (📎 2.4 MB) for EIS public consultation.
30 September 2022	Gazettal (📎 225 KB) of 'coordinated project' declaration.
15 July 2022	Application, including final initial advice statement (📎 8.3 MB), submitted.
22 March 2022	Commonwealth Minister for the Environment decided the project is a ' controlled action '



EPBC Referral Process

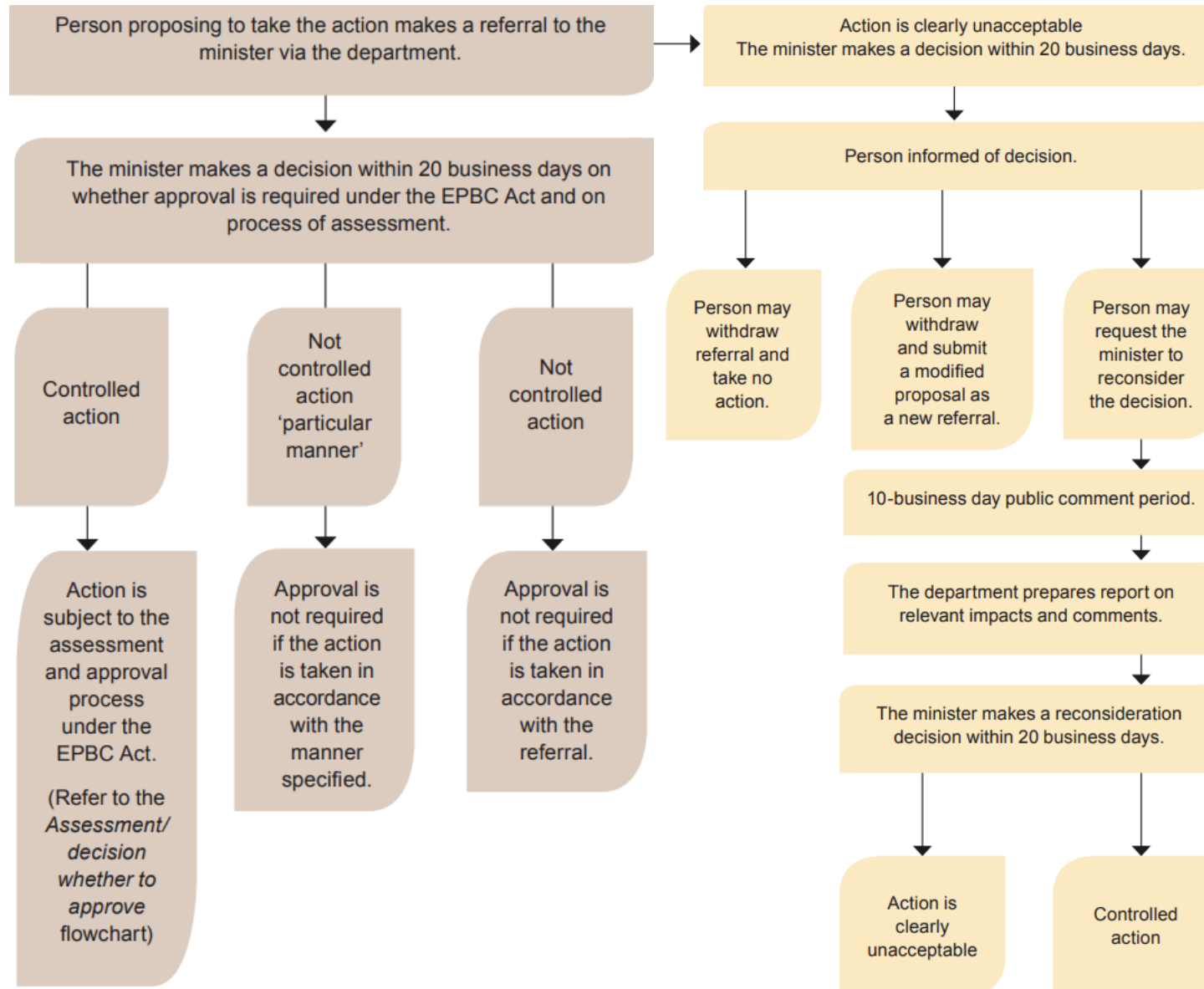
Deciding if a proposed action needs to be referred

- Is the proposed action likely to have a significant impact on a matter of national environmental significance?

The matters of national environmental significance are:

- world heritage properties
 - national heritage places
 - wetlands of international importance (often called 'Ramsar' wetlands after the international treaty under which such wetlands are listed)
 - nationally threatened species and ecological communities 
 - migratory species
 - Commonwealth marine areas
 - the Great Barrier Reef Marine Park
 - nuclear actions (including uranium mining)
 - a water resource, in relation to coal seam gas development and large coal mining development.
- Is the proposed action likely to have a significant impact on the environment in general (for actions by Commonwealth agencies or actions on Commonwealth land) or the environment on Commonwealth land (for actions outside Commonwealth land)?
 - If you are not certain about whether your proposed action requires approval under the EPBC Act you may refer the proposal for a decision by the minister.

EPBC Referral Process



Upcoming works

- Surveys and studies likely to commence between now and the next meeting:
 - Terrestrial ecology surveys including specialist surveys for key species
 - Aquatic ecology (continuation)
 - Soil sampling
 - Contaminated land assessment
 - Water quality monitoring
 - Landscape and visual amenity
 - Groundwater monitoring
- Indigenous impact assessment being undertaken by Kabi Kabi to support the Project



NEXT STEPS - OUR FOCUS SEPTEMBER/OCTOBER

1.

EIS Process

Working with the OCG and DCCEEW in support of their decisions and processes under State and Commonwealth legislation

Public notification of the draft terms of reference, EPBC Referral Main Works, Preliminary Documentation for the Exploratory Works



2.

EIS Commencement

Working with our technical specialists to undertake assessments and understand the key challenges



3.

Consultation with our stakeholders

- *To be confirmed*
- *May be workshops, specialist briefings, one-on-one landholder sessions, community drop in sessions*



4.

Exploratory works

Approvals, compliance, preliminary documentation submission



Morning Tea

Stakeholder engagement update

Industry and Community engagement

- Post the Financial Investment Decision (FID) announcement, Queensland Hydro hosted six community information sessions for residents, community, and other stakeholders.
- Purpose: To share information and gather feedback on:
 - the Financial Investment Decision
 - Exploratory works
 - Environmental Impact Assessment (EIS)
- Over 150 stakeholders attended the sessions
- Stakeholders engaged in 1:1 conversations with Queensland Hydro team members.
- Popular stakeholder discussion themes:
 - Procurement, supplier and job opportunities
 - Ecology and biodiversity
 - General pumped hydro
- Three Industry Briefings were also held to introduce the two pumped hydro projects, outline the approach to engagement and partnering with industries throughout the project, and presenting the first tender packages.
 - Brisbane (5 July 2023)
 - Caloundra (6 July 2023)
 - Gympie (7 July 2023)



Stakeholder enquiries

Response to stakeholder enquiries:

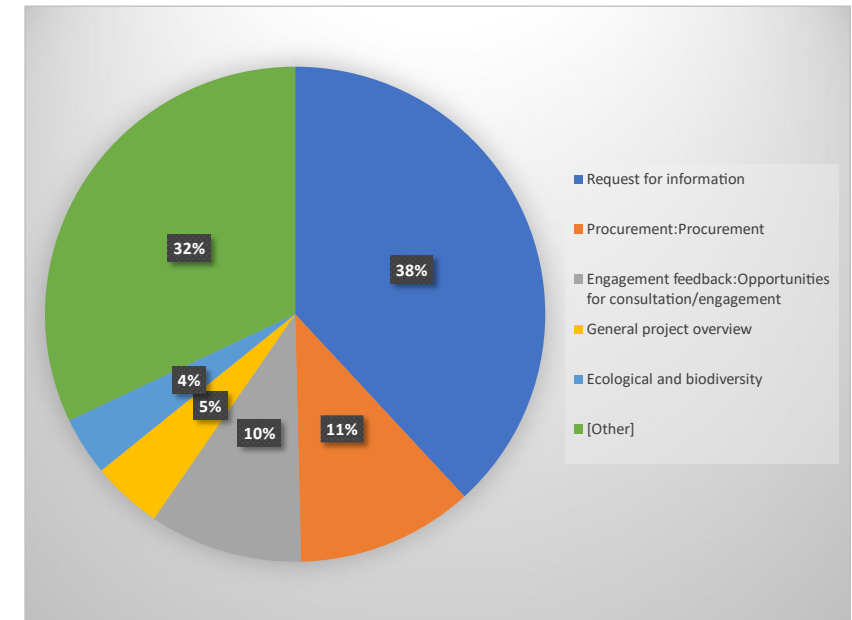
- Enquiries are received
 - in person
 - [Borumba@qldhydro.com.au](mailto:borumba@qldhydro.com.au)
 - 1800 433 939

- 489 x events of incoming contact with Queensland Hydro of that (84% via email)

- 131 x incoming enquiries/requests relate to industry procurement and/or employment opportunities

- QLD Hydro Engagement Team staff members monitor and provide initial response to the incoming emails and phone calls.

Incoming enquiries: Top 5 themes



What we've heard to date

- Over 2 years working with the community, we have heard community interest in:
 - **Project benefits:** ensuring the way the project is delivered maximises benefits to the community, including legacy
 - **Community benefits:** support from Queensland Hydro for community activities and infrastructure to reflect the impacts of the project on the community

- What we think we have heard:

Project Benefits	Community Benefits
Improved access roads	Improved recreation and tourism at Borumba Dam
Improved bridges	Investment in community facilities, parks etc
Legacy housing and accommodation	Investment and sponsorship in local events and activities
New fish stocking association facilities	Supporting local skills and employment development
New Rural Fire Services facilities	Supporting local students to advance their education
Increased and improved emergency and police services	Investment in eco and adventure tourism opportunities
Environmental investment, research, restoration, and offsets	Supporting business growth
Active involvement of traditional owners	

Get in touch

1800 433 939
info@qldhydro.com.au
qldhydro.com.au
ABN 81 661 444 515

