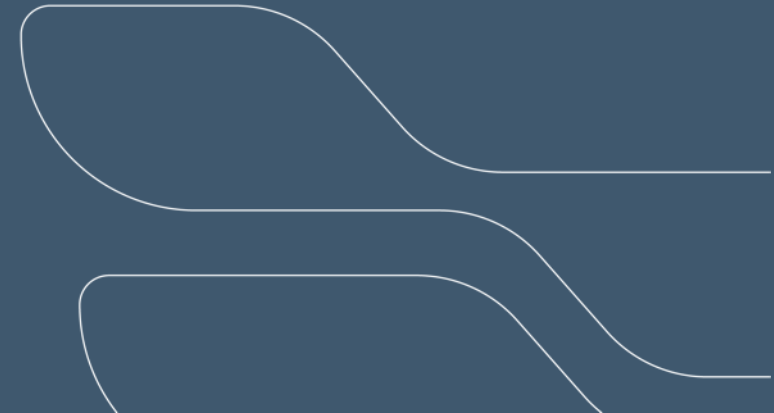


# Borumba Pumped Hydro Project

Stakeholder Reference Group briefing  
Works Regulation received for temporary  
accommodation camps

15 AUGUST 2023



# Agenda

1

**Welcome and  
introductions**

2

**Overview of  
Project  
approvals**

3

**What does  
the works  
regulation  
apply to?**

4

**Project  
report for the  
works  
regulation**

5

**Question and  
answer  
session**

6

**Next steps**



## Acknowledgement of Country

In the spirit of reconciliation, Queensland Hydro acknowledges the Traditional Custodians of Country throughout Queensland and, in particular the lands, skies and waters on which we operate. We celebrate the diversity of Aboriginal peoples and their ongoing cultures and connections to the lands, skies and waters of Queensland.

Queensland Hydro pays respect to Elders past and present honouring their continuing spiritual and cultural connections to Country.



# Welcome and introductions

# Introductions

On this call from Queensland Hydro:

**Kylie Gomez Gane**

Head of Environment, Approvals and Land

**Julie Spencer**

Head of Stakeholder Engagement and Communications

**Catherine Cussen**

Head of Government Relations, Policy and Media

**Michael Price**

Environmental and approvals manager for the Borumba Pumped Hydro Project

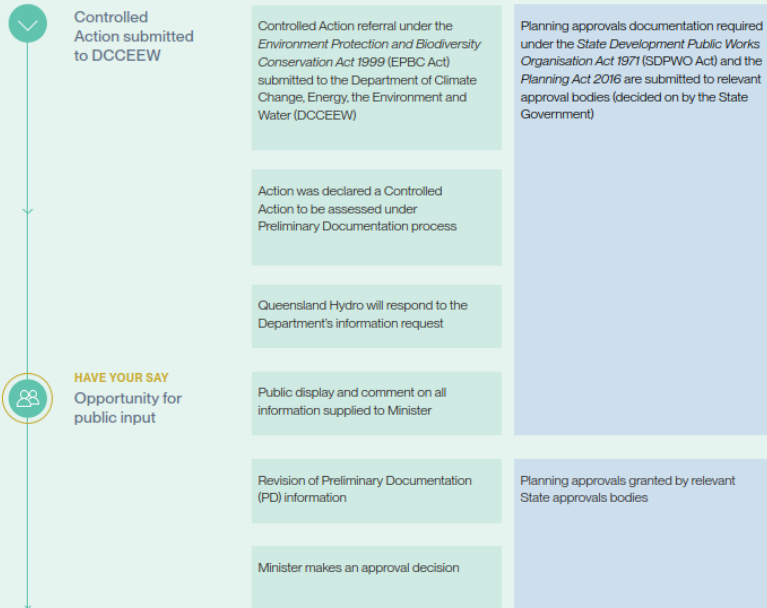
**Nirvana Searle**

Environmental and approvals advisor

# Overview of Project approvals

# Overview of Project approvals

## Exploratory works approvals



Exploratory works may begin

- Commonwealth Government approval step
- State Government approval step
- Bilateral (Commonwealth and State Government) agreement
- Opportunities for input

\* These are the assumed processes. Actual processes will be determined by Commonwealth and State Government.

This document was created on 12 July 2023 and is of a general nature and subject to change.

## Main works approvals



Main works may begin

This information is available on the Queensland Hydro website [here](#)

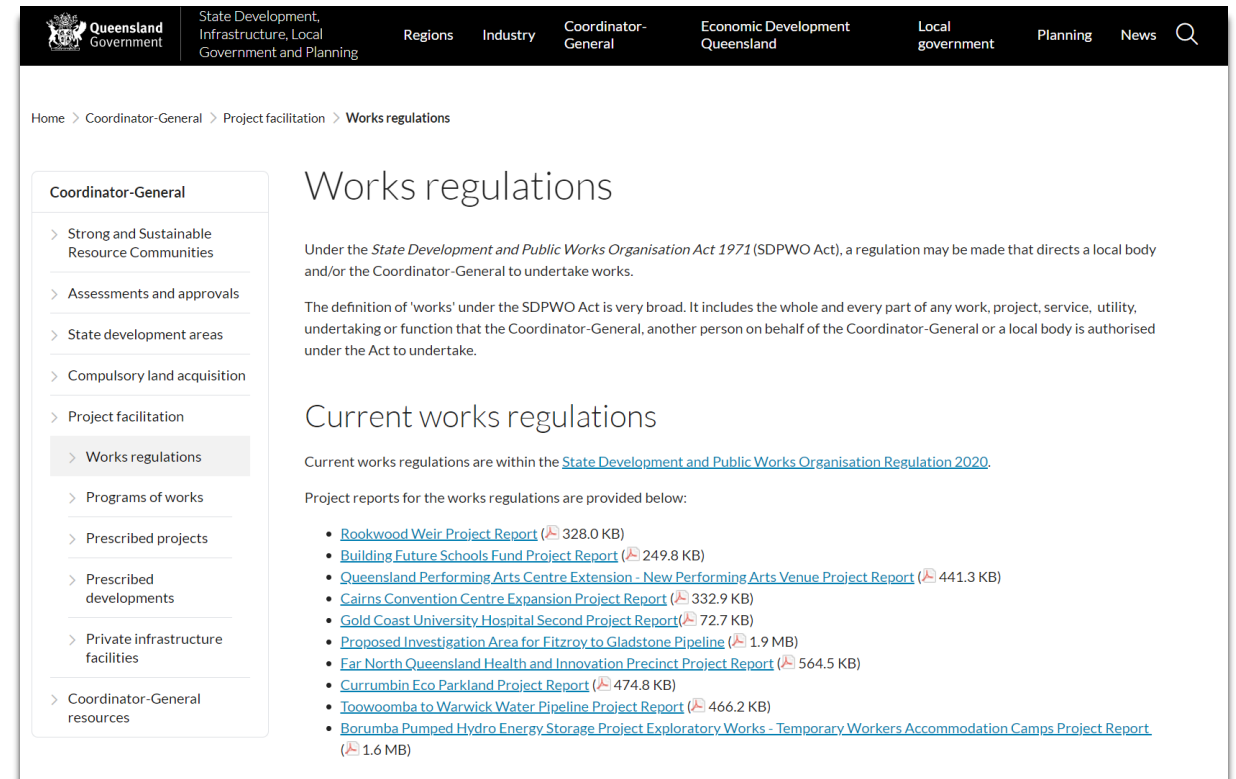
# What does the works regulation apply to?



# What is a works regulation?

## A works regulation is:

- made under the *State Development and Public Works Organisation Act 1971* (SDPWO Act)
- directs a local body and/or the Coordinator-General to undertake works
- prepared by the Office of the Coordinator-General (and is a Coordinator-General process)



The screenshot shows a web page titled "Works regulations" under the "Coordinator-General" section. The page includes a navigation menu at the top with links for "Regions", "Industry", "Coordinator-General", "Economic Development Queensland", "Local government", "Planning", and "News". The breadcrumb trail is "Home > Coordinator-General > Project facilitation > Works regulations".

**Coordinator-General**

- > Strong and Sustainable Resource Communities
- > Assessments and approvals
- > State development areas
- > Compulsory land acquisition
- > Project facilitation
  - Works regulations**
  - > Programs of works
  - > Prescribed projects
  - > Prescribed developments
  - > Private infrastructure facilities
- > Coordinator-General resources

## Works regulations

Under the *State Development and Public Works Organisation Act 1971* (SDPWO Act), a regulation may be made that directs a local body and/or the Coordinator-General to undertake works.

The definition of 'works' under the SDPWO Act is very broad. It includes the whole and every part of any work, project, service, utility, undertaking or function that the Coordinator-General, another person on behalf of the Coordinator-General or a local body is authorised under the Act to undertake.

## Current works regulations

Current works regulations are within the [State Development and Public Works Organisation Regulation 2020](#).

Project reports for the works regulations are provided below:

- [Rookwood Weir Project Report](#) (📎 328.0 KB)
- [Building Future Schools Fund Project Report](#) (📎 249.8 KB)
- [Queensland Performing Arts Centre Extension - New Performing Arts Venue Project Report](#) (📎 441.3 KB)
- [Cairns Convention Centre Expansion Project Report](#) (📎 332.9 KB)
- [Gold Coast University Hospital Second Project Report](#) (📎 72.7 KB)
- [Proposed Investigation Area for Fitzroy to Gladstone Pipeline](#) (📎 1.9 MB)
- [Far North Queensland Health and Innovation Precinct Project Report](#) (📎 564.5 KB)
- [Currumbin Eco Parkland Project Report](#) (📎 474.8 KB)
- [Toowoomba to Warwick Water Pipeline Project Report](#) (📎 466.2 KB)
- [Borumba Pumped Hydro Energy Storage Project Exploratory Works - Temporary Workers Accommodation Camps Project Report](#) (📎 1.6 MB)

# What does the works regulation apply to?

## **This works regulation:**

- directs Queensland Hydro to construct two temporary works accommodation camps (TWAC)
- directs the Coordinator-General to exercise powers under the *State Development and Public Works Organisation Act 1971* (SDPWO Act) to support the project works.
- enables the TWAC construction to progress without a requirement for Queensland Hydro to seek development approvals from Somerset and Gympie Regional Councils.
- allows the Coordinator-General to assist facilitation of works to support the TWACs using various functions and powers of the Coordinator-General in the SDPWO Act, such as opening, closing and rearranging roads to support road upgrades.

## What does the works regulation apply to?

The works regulation would not affect the requirement for Queensland Hydro to seek approvals for all other aspects of the proposed exploratory works and main works for the Borumba PHES Project, including approvals under the Australian *Environment Protection and Biodiversity Conservation Act 1999*.

If the works regulation was not made:

- the TWACs would be subject to development assessment processes under the local planning schemes.
- assessments could take up to 12 months to complete.

# Project report for the works regulation



# Project report for the works regulation

- Uploaded to the website of the Office of the Coordinator General today
- We will go through each section today

## Contents

Purpose of this report.....	iv
1. Background.....	1
1.1 Borumba Pumped Hydro Energy Storage Project.....	1
1.2 Borumba Pumped Hydro Energy Storage Project Exploratory works.....	1
2. Project works.....	2
2.1 The responsible entity.....	2
2.2 Location.....	2
2.3 Construction.....	2
2.4 Operations.....	3
2.5 Decommissioning.....	3
3. Reserved works.....	4
4. Conclusion.....	5

## Appendices

- Appendix 1. Locality of project
- Appendix 2. Location of each proposed TWAC site

# Borumba Pumped Hydro Energy Storage Project Exploratory Works – Temporary Workers Accommodation Camps

## Project Report

July 2023

COORDINATOR-GENERAL



[www.statedevelopment.qld.gov.au/\\_\\_data/assets/pdf\\_file/0022/83326/borumba-phes-exploratory-works-twac.pdf](http://www.statedevelopment.qld.gov.au/__data/assets/pdf_file/0022/83326/borumba-phes-exploratory-works-twac.pdf)

## Appendix 1. Locality of project

Figure A1.1 Locality of project

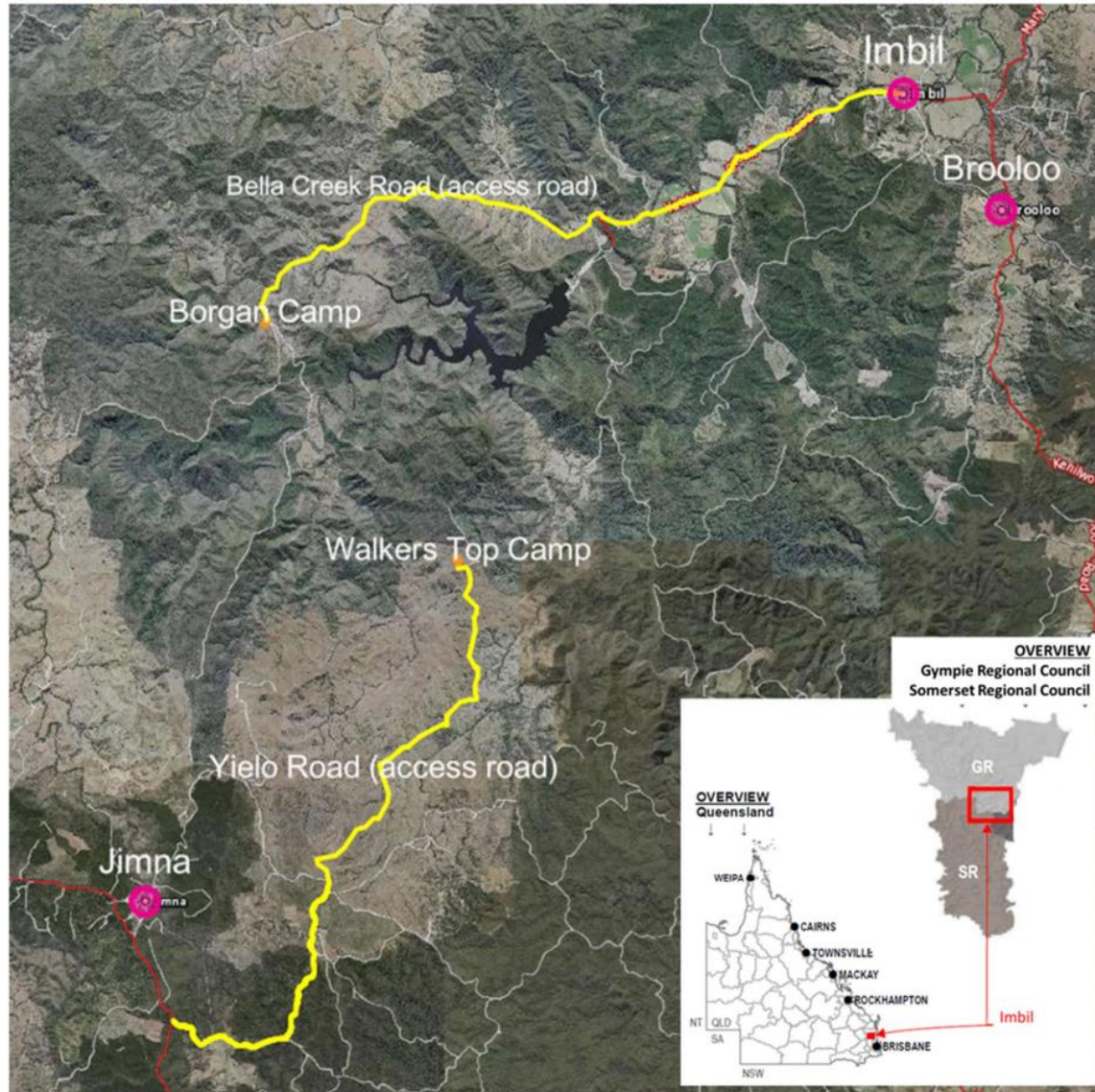




Figure A 1.1 Locality of project (zoomed in)





## Appendix 2. Location of each proposed TWAC site

Figure A2.2 Borgan Camp location

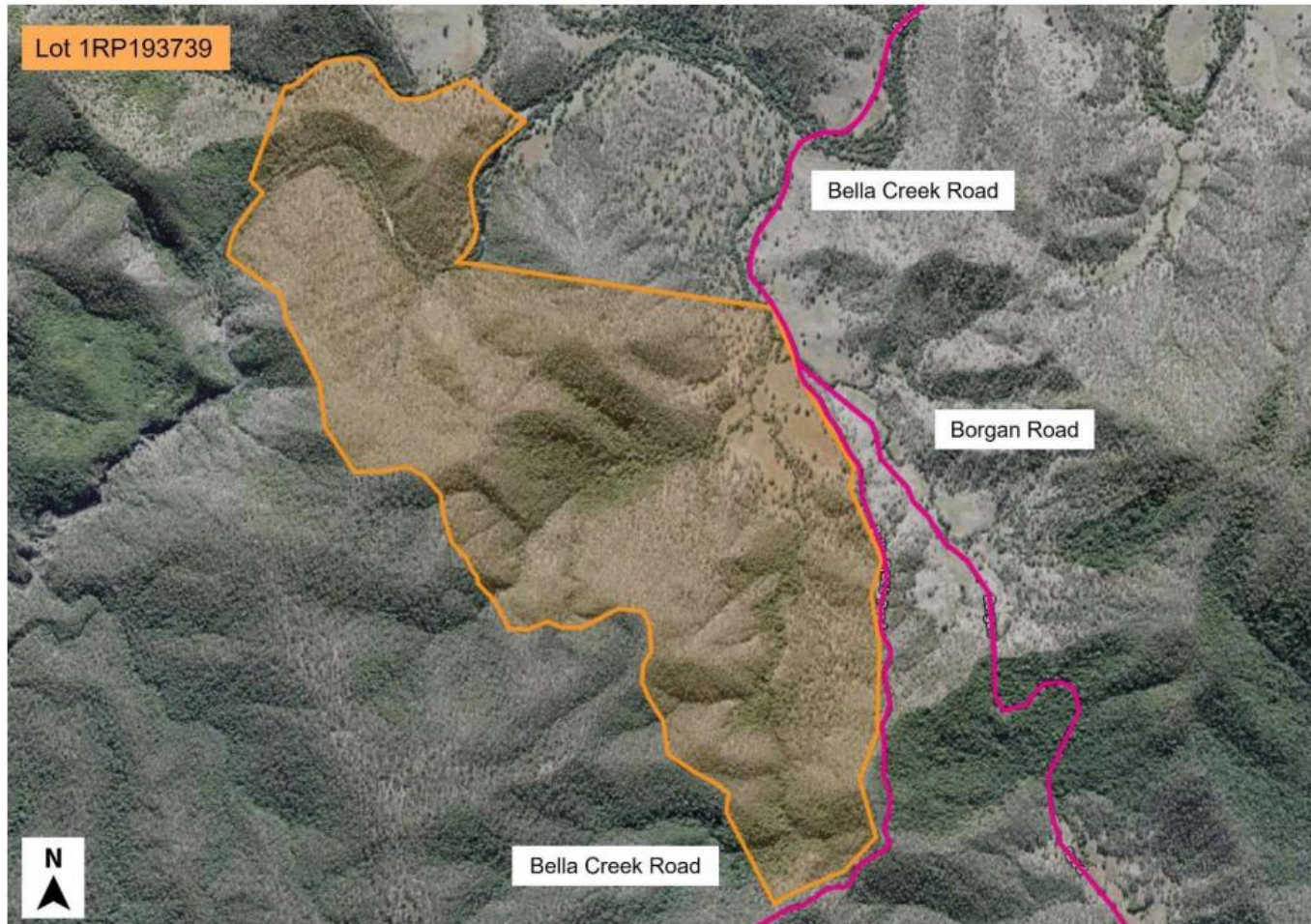
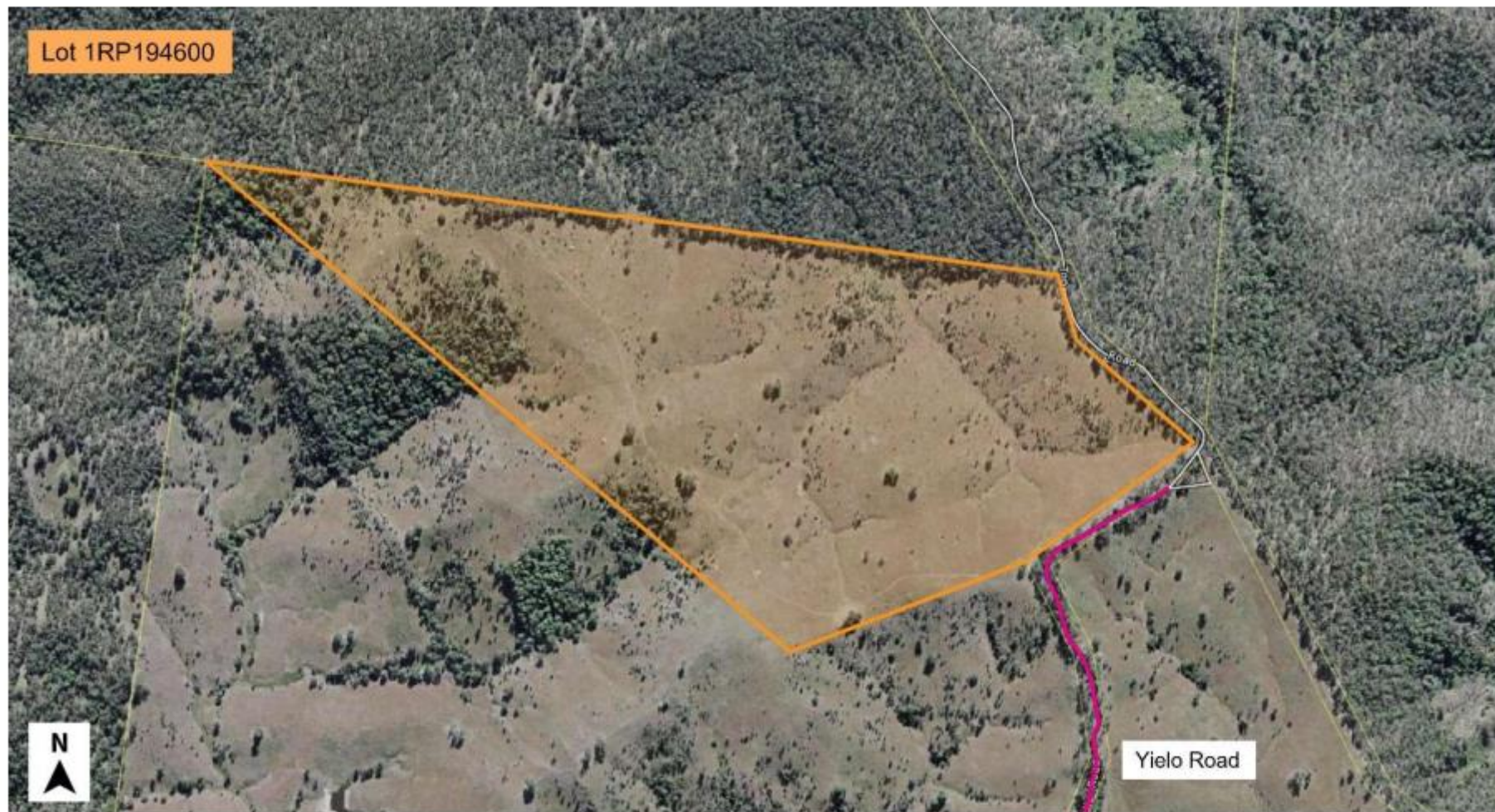




Figure A2.3 Walkers Top Camp location



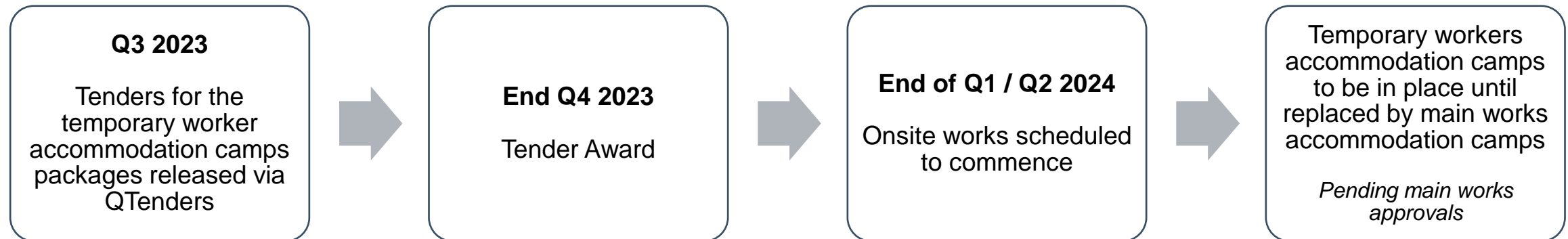
# Next steps

# Next steps

## Stakeholder Reference Group meeting

- To be scheduled for next week for further and in-person discussion
- Invitation to be sent to SRG members this week

## Approximate timeline for TWACs



# Questions?



---

## Get in touch

1800 433 939  
[info@qldhydro.com.au](mailto:info@qldhydro.com.au)  
[qldhydro.com.au](http://qldhydro.com.au)  
ABN 81 661 444 515

