

Borumba Pumped Hydro Project

Stakeholder Reference Group Meeting

4 FEBRUARY 2025

This document was created on 4 February 2025,
it is of a general nature and is subject to change.

Acknowledgement of Country

In the spirit of reconciliation, Queensland Hydro acknowledges the Traditional Custodians of the lands, skies and waters where we operate throughout Queensland.

The Borumba Pumped Hydro Project is being developed on the traditional lands of the Kabi Kabi People. Queensland Hydro acknowledges their spiritual and cultural belonging and their continuing connection to land, waters, and culture.

Queensland Hydro also acknowledges the Butchulla People, the Traditional Owners of the lands downstream of the Project. Queensland Hydro acknowledges their spiritual and cultural belonging and their continuing connection to land, waters, and culture.

We celebrate the diversity of Aboriginal and Torres Strait Islander peoples, and extend our respect to Elders past and present, and honour their continuing spiritual and cultural connections to Country.



CONTENTS

01

Actions update

02

Focus group share

03

General updates

04

Exploratory works update

05

Project update

06

Community update

Queensland Hydro Attendees

Geoff Scott – Executive General Manager – Delivery,
Acting Project Director, Borumba PHES

Fiona Martin – Head of Stakeholder Engagement and
Communication

Nirvana Searle – Environment Lead

Kara Hughes – Acting Engagement Manager Borumba

Georgia Southern – Senior Advisor, Stakeholder
Engagement

Group Members

Bruce Horsfall

Cheryl Murphy

Gary Rozynski

Ian Lowe

Ian Stehbens

James (Jim) Garrett

Janelle Parker

Lee Robinson

Lesa Bell

Martin Muller

Narelle McCarthy

Pete Cusack

Reg Lawler

Richard Belcham

Roger Currie

Ruth Golden

Sherry Lowe

Sotera Trevaskis

Project delivery leadership team

- Geoff Scott, Executive General Manager (EGM) Delivery and acting Borumba Project Director
 - Duncan Ritchie, Deputy Project Director, Dams and Surface Works
 - Shannon Green, Deputy Project Director, Powerhouse
 - Michael Owen, Deputy Project Director, Technical



Actions update

Action items from the last meeting

Item	Action	Status
Queensland Hydro to provide feedback from SRG members regarding sediment controls on Bella Creek Road to the Project team.	Feedback provided to site environment team to consider for any future works in the area.	Considered
Queensland Hydro to provide additional information about the Lambert Hyne Drive parking improvement works to SRG members.	Action closed out via email on 6 December 2024. Members were provided with slides presented to the Imbil and Surrounds Focus Group on 4 December 2024. Information included where the parking would be located, what the work would entail and the operation of the proposed parking.	Closed
Queensland Hydro to provide feedback about community concern and Council plans to upgrade the intersection at Bella Creek Road and Yabba Creek Road to the roads team to consider in the Project's planning. When available, report back to the SRG about proposed upgrades for the Project's main works haulage routes.	Feedback has been provided to design team. Planning is ongoing and proposed designs will be shared with SRG when available. The intersection will not be upgraded as part of exploratory works, however this will be reviewed for the project's main works access requirements.	Ongoing
Provide feedback about digital washdown certificates to the project team.	Printed certificates are currently required to be kept in vehicles. The feedback on digital certificates has been provided to the construction team to consider when future washdown facilities are constructed.	Considered
Provide image of temporary washdown facility at next SRG meeting.	Images on following slide.	Closed
Queensland Hydro to provide information about the total capacity of the upper reservoir to the SRG.	The reference design for the proposed upper reservoir has a full supply level (FSL) of 490.5 m AHD, a storage capacity of 70 GL and an inundation area of 355 ha.	Closed
Queensland Hydro to provide information to the SRG about future dam operations and who will be responsible for the new dam once the Project is complete.	The planning for the operation of the dams in the future is ongoing. Information on dam operations to be provided to the SRG when available.	Ongoing

Temporary on-site washdown facility

Queensland Hydro implements several biosecurity measures on site, including management of vehicle access tracks and providing onsite temporary washdown facilities.



Temporary on-site washdown facility

Focus group share

Environment Focus Group – Ian Stehbens and Roger Currie

Group members

Debbie Seal
Martin McArthur
Phillip Moran
Kim Wood
Rachel Lyons
Stephen Burgess
Ian Stehbens
Carolyn Harris
Mark Vanner
Chris Cameron
John Haag
Roger Currie

Top three discussion points

1. Offsets

- Discussion about the Greater Glider Forest Park proposed by the former government.
- Discussion about the challenges of offsets for aquatic species. Shortfalls in government policy and regulation around aquatic offsets. Seeking advice from locals and experts to provide better solutions in offset planning.
- Discussion about opportunities to change land tenure for offsets.
- Suggestion to work with local landcare and environment groups to support offsets work.

2. Activity

- Members broke into groups to answer four questions to assist Queensland Hydro for the EIS.
 - What are your biggest environmental concerns (from or related to the project)?
 - What are your biggest ‘hopes’ for the environment (from or related to the project)?
 - What insights can you share about the local environment?
 - Is there community environmental monitoring being undertaken, that Queensland Hydro could tap into? e.g. water quality sampling.

3. Naturally Occurring Asbestos (NOA)

- Queensland Hydro is looking at options to relocate the Borgan Road temporary workers camp due to the presence of NOA. Discussion around what was found and how Queensland Hydro will relocate the camp within the already granted approval.

Imbil and Surrounds Focus Group - Reg Lawler

Group members

Allan Rainbow
Arna Love
Carolyn Harris
Craig Thomson
David Hickey
Don MacAulay
Heinke Butt
Jo Lockwood
Karen Phillips
Kim Wood
Malcolm Oakley
Peter Cluff
Reg Lawler
Ross Nicoll

Top three discussion points

1. Lambert Hyne Drive parking

- The focus group noted that the parking on Lambert Hyne Drive being reserved for Queensland Hydro may not be supported by the community as members of the public may wish to use the parking during the week. Members noted that residents had not been consulted about the works and provided feedback that this is an issue that residents would like to have input on. Queensland Hydro committed to taking this feedback to the project team to consider and report back to the group on the outcome.

2. Social and Health Impact Assessment (SHIA for main works EIS)

- Discussion around the social impact assessment for the Project's exploratory works. The information gathered during the EIS engagement has fed into the exploratory works management plans. Once approved by the Office of the Coordinator-General, these management plans will be available on the Queensland Hydro website.
- Discussion around access to the boat ramp during main works construction. Members suggested that Queensland Hydro look to set up a temporary alternative access point during construction.
- Discussion around how many people currently use the lake, and request for further briefing to the Focus Group on recreational studies being used to inform the assessment of recreational impacts and opportunities.

3. Controls in place to protect Bella Creek during the road widening works

- Discussion following from previous meeting where group requested additional information on the controls in place during road works.

Environment Working Group – Narelle McCarthy

Group members

Mary River Catchment
Coordinating
Committee (MRCCC)

Sunshine Coast
Environment Council
(SCEC)

Queensland
Conservation Council
(QCC)

Burnett Mary Regional
Group (BMRG)

Australian Rivers
Institute, Griffith
University

Top three discussion points

1. Preliminary Documentation

- Overview of the Preliminary Documentation and what information is contained within the report.
- General discussion around each section of the document and where to find supporting information e.g. management plans etc.

2. Mary River Catchment Coordinating Committee (MRCCC) balancing storage proposal

- Discussed and provided feedback on the MRCCC's proposal for an alternative pumped hydro scheme at Borumba.
- The alternative scheme proposes a lower balancing storage of a comparable volume to the currently proposed upper storage (approx. 70 GL) be constructed on Borumba Creek, adjacent to the existing Lake Borumba. The proposal seeks to mitigate two of the key impacts from the project; inundation of Lowland Rainforest TEC, and, suspension of fine sediments and potential downstream impacts.
- Queensland Hydro's ongoing main works design optimisation is considering stakeholder feedback on design alternatives.

3. Offsets

- Queensland Hydro provided an overview of the environmental offsets process and planning for the proposed Project.
- Discussion about the offset requirements for the exploratory works, legal security of land, who is represented on the Offsets Working Group, community suggestions for offsets locations, the Greater Glider Forest Park proposed by the former government and net positive environmental benefits over and above the Project impacts.

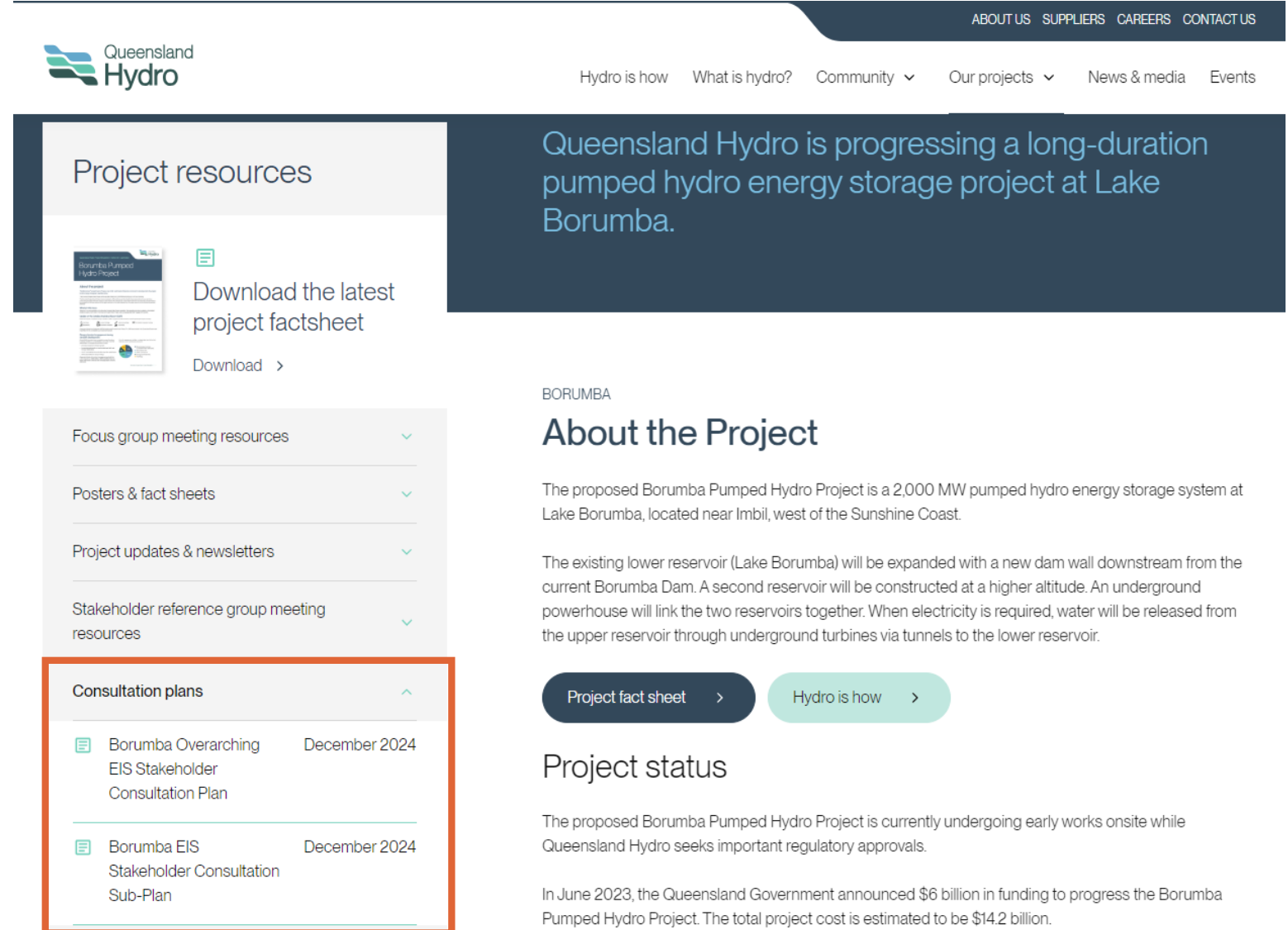
Note: There is no Regional Focus Group update as the group has not met since the last SRG meeting.

Next meeting is scheduled for 25 March 2025.

General updates

Environmental Impact Statement (EIS) Stakeholder Consultation Plan

- Environmental Impact Statement (EIS) Stakeholder Consultation Plan is available on the Borumba website.
- The Plan outlines the communication and engagement approach and activities for developing the EIS for the Project.
- It provides a framework for ensuring that key stakeholders and communities are involved and engaged throughout the EIS process.



The screenshot shows the Queensland Hydro website interface. At the top right, there are navigation links: ABOUT US, SUPPLIERS, CAREERS, CONTACT US. Below this is a secondary navigation bar with links: Hydro is how, What is hydro?, Community, Our projects, News & media, Events. The main content area is divided into two columns. The left column is titled 'Project resources' and contains a 'Download the latest project factsheet' link with a 'Download' button. Below this are several expandable sections: 'Focus group meeting resources', 'Posters & fact sheets', 'Project updates & newsletters', and 'Stakeholder reference group meeting resources'. The 'Consultation plans' section is highlighted with a red border and contains two entries: 'Borumba Overarching EIS Stakeholder Consultation Plan' and 'Borumba EIS Stakeholder Consultation Sub-Plan', both dated 'December 2024'. The right column features a large blue banner with the text: 'Queensland Hydro is progressing a long-duration pumped hydro energy storage project at Lake Borumba.' Below the banner is the heading 'BORUMBA About the Project'. The text describes the project as a 2,000 MW pumped hydro energy storage system at Lake Borumba, located near Imbil, west of the Sunshine Coast. It details the expansion of the lower reservoir and the construction of a second reservoir at a higher altitude, connected by an underground powerhouse. At the bottom of the right column, there are two buttons: 'Project fact sheet' and 'Hydro is how'.

Website: www.qldhydro.com.au/projects/borumba/

Environmental Impact Statement (EIS) Stakeholder Consultation Plan

Stakeholder Consultation Plan – Main Works EIS		
<ul style="list-style-type: none"> This is the overarching plan which provides common information relevant to all stakeholder engagement activities during the EIS phase for the Borumba Project. The Plan details the broader strategic engagement approach, regulatory requirements for engagement on the EIS, and Queensland Hydro’s processes, tools and systems for managing, tracking and reporting on engagement activities. 		
EIS Consultation Sub-Plan	Kabi Kabi People Consultation Sub-Plan	Butchulla People Consultation Sub-Plan
<ul style="list-style-type: none"> This Sub-Plan provides a framework for engaging key stakeholders and communities in the EIS process and establishing a pathway for design, construction and decommissioning of the Project’s main works. Consultation activities and tools for the EIS process have been selected to align with community and stakeholder interests and needs and include a Stakeholder Reference Group, focus groups and working groups, engagements with specific groups and community consultation events. 	<ul style="list-style-type: none"> The Kabi Kabi People are the recognised Traditional Owners of the land on which the proposed Borumba Pumped Hydro Project is to be constructed. This Sub-Plan provides a framework for ensuring that the Kabi Kabi People are involved and engaged throughout the EIS process. It also establishes a pathway for engagement during the design, construction and decommissioning of the Project’s main works. The engagement activities in the Sub-Plan are designed to capture and to consider the cultural, spiritual, environmental, social, and economic values, views, and concerns of the Kabi Kabi People in project decision-making. 	<ul style="list-style-type: none"> The Butchulla People are the recognised Traditional Owners downstream of the Project. This Sub-Plan provides a framework for ensuring that the downstream cultural, spiritual, environmental, social and economic values, interests and concerns of the Butchulla People are captured and considered during the EIS process and in project decision-making.

Figure 1 Plan hierarchy

Planned upcoming works and site activities

Activity	Location	Timeframe*	What to expect
Staged construction of temporary workers' camp	Lake Borumba Project site - top camp	Ongoing - early 2025	<ul style="list-style-type: none"> Additional truck, equipment and work crew movement to and from the Project site Localised noise, dust and vibration Staged opening of the camp
Additional carparks and street lighting	Lambert Hyne Drive, Imbil	Late January to early March 2025	<ul style="list-style-type: none"> Localised noise, dust and vibration Temporary traffic control at times
Road and stock grid maintenance, and road safety upgrades	Yielo Road, Jimna Bella Creek Road and Yabba Creek Road, Imbil	January to mid-2025	<ul style="list-style-type: none"> Changed traffic conditions including temporary traffic control at times Additional truck movements Localised noise, dust and vibration Approved tree trimming and vegetation removal for road safety
Ground condition (geotechnical) surveys	Around Lake Borumba and along local roads including Bella Creek Road, Borgan Road, Derrier Road and Old Forrest Drive at Imbil; Old Yabba Road at Bella Creek; and Sunday Creek Road and Yielo Road at Jimna	Ongoing throughout 2025	<ul style="list-style-type: none"> Excavating and backfilling small boreholes near Lake Borumba, along roads, and at the Project site Changed traffic conditions including temporary traffic control at times Additional truck movements on local roads Localised noise at times
Environmental assessments	Around Lake Borumba, along waterways and in local road reserves	Ongoing throughout 2025	<ul style="list-style-type: none"> Project officers collecting data in the area on foot or in vehicles including water sampling, taking still and video images, and mapping vegetation
Delivery of equipment, materials and temporary structures to the Project site	Haulage route from north (Imbil): Yabba Creek Road, Bella Creek Road and Borgan Road Haulage route from south (Kilcoy): Kilcoy Murgon Road, Sunday Creek Road and Yielo Road	Throughout 2025 – key transport periods will be advised.	<ul style="list-style-type: none"> Additional truck movements on local roads; some with oversized loads and escort vehicles Potential congestion and travel delays in peak periods Temporary traffic control as required

* Timeframes subject to change pending weather and construction conditions

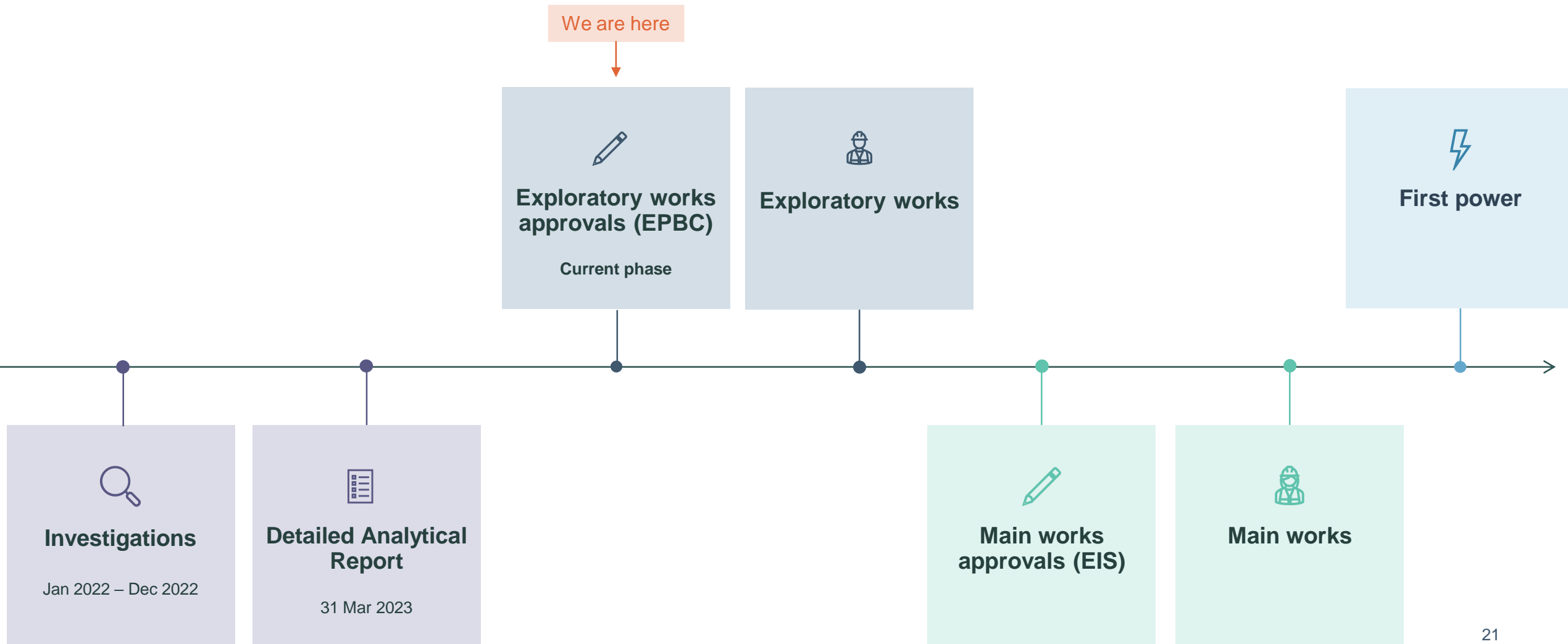
Proposed parking

- Queensland Hydro are looking to establish project vehicle parking and potential maintenance services.
- Contractors will look to establish park and ride facilities for staff vehicles. From there, staff will be transported into site to reduce local traffic.
- All parking options will be subject to relevant approvals.
- Once these plans progress, further updates will be provided with more detailed discussions planned with the Imbil and Surrounds Focus Group.



Exploratory works update

Timeline – Borumba Pumped Hydro Project



What are exploratory works?

- Critical geological technical investigations to confirm the geological conditions and design for main works.
- Investigate areas where key underground infrastructure will be constructed to further develop the limited geological information currently available.



Indicative drill rig

Exploratory works project elements

Geotechnical investigations

- Test pits
- Boreholes
- Geophysics

Spoil disposal

- Two dedicated areas:
 - Tunnel spoil disposal area,
 - Kingaham spoil disposal area.
- Storage and management of excess material from exploratory tunnelling, geotechnical drilling and construction activities, as well as stockpiling of stripped topsoil.

Site access

- Construction of new access tracks, and upgrades to existing tracks, including waterway crossings (including bridges).
- Realignment of a section of Bella Creek Road (Kingaham Creek bypass).

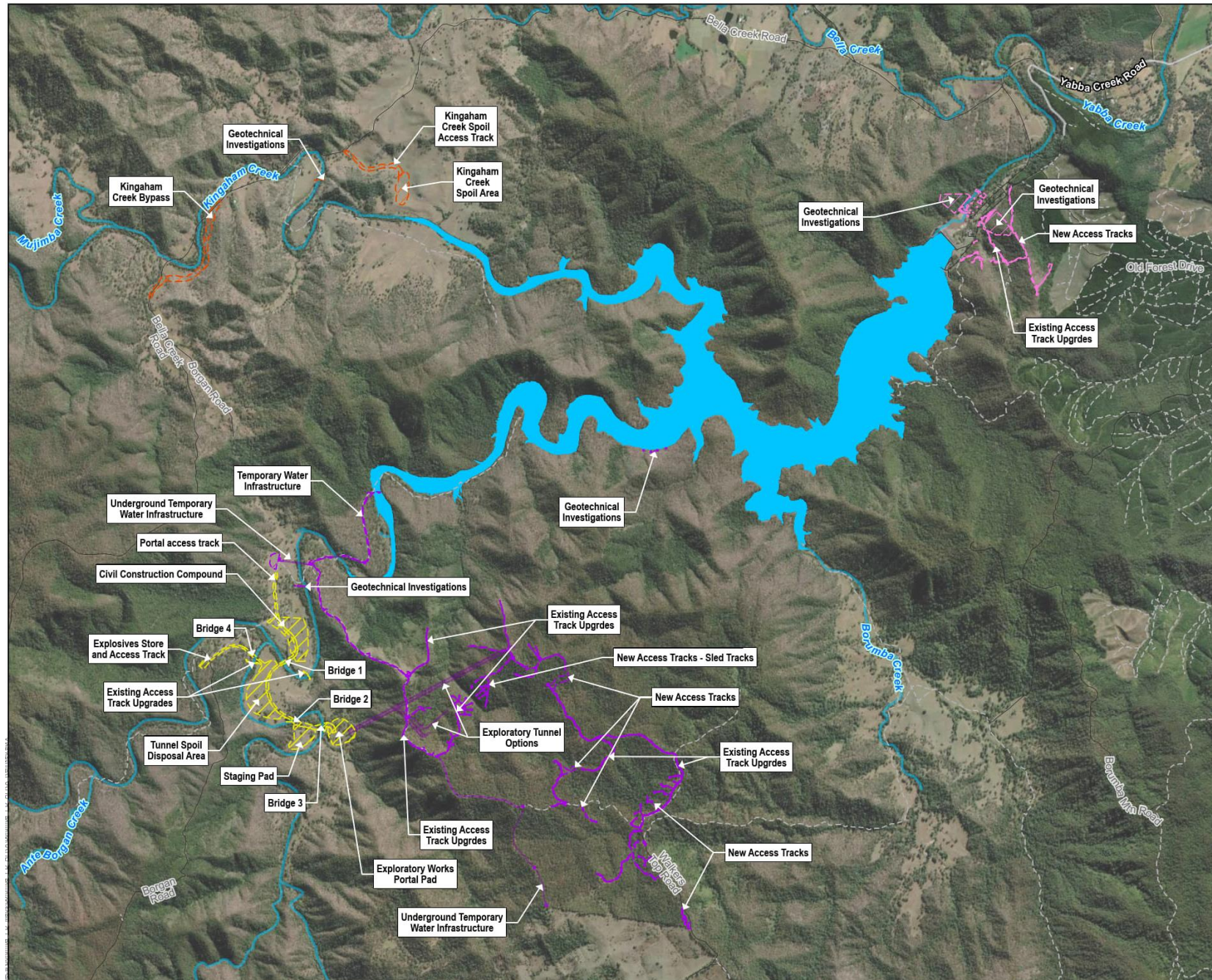
Exploratory tunnel infrastructure

- Portal pad (work pad at the entrance of the exploratory tunnel portal).
- Staging pad (work pad located near the portal pad containing equipment and material to support exploratory tunnelling).
- Exploratory tunnels.
- Explosives store (and associated access tracks).

Other supporting infrastructure

- Temporary water infrastructure (water pumps, pipelines and storage tanks collecting water from Lake Borumba for distribution to geotechnical boreholes and exploratory tunnel).
- Civil construction compound (laydown area).

Exploratory works project elements



LEGEND

- Watercourses
- Local Roads
- Tracks
- State Controlled Roads
- Lake Borumba (FSL 135.01m AHD)

Exploratory Works Project

Project Footprint by Work Area

- Area 1 - Borumba Dam
- Area 2 - Kingaham Creek
- Area 3 - Walkers Top
- Area 4 - Borgan

Project Area by Work Area

- Area 3 - Walkers Top (Underground)

Exploratory works project elements

- Exploratory works are largely temporary in nature and are not intended to remain in use for an extended duration.
- Should the Project's main works not proceed, the exploratory works areas will be remediated where appropriate (e.g. revegetation of cleared areas, plugging of boreholes).
- Elements will remain in place if they are required for property access and maintenance (e.g. some access tracks).
- The Kingaham Creek bypass would remain in place.



Example of temporary bridges proposed for exploratory works.

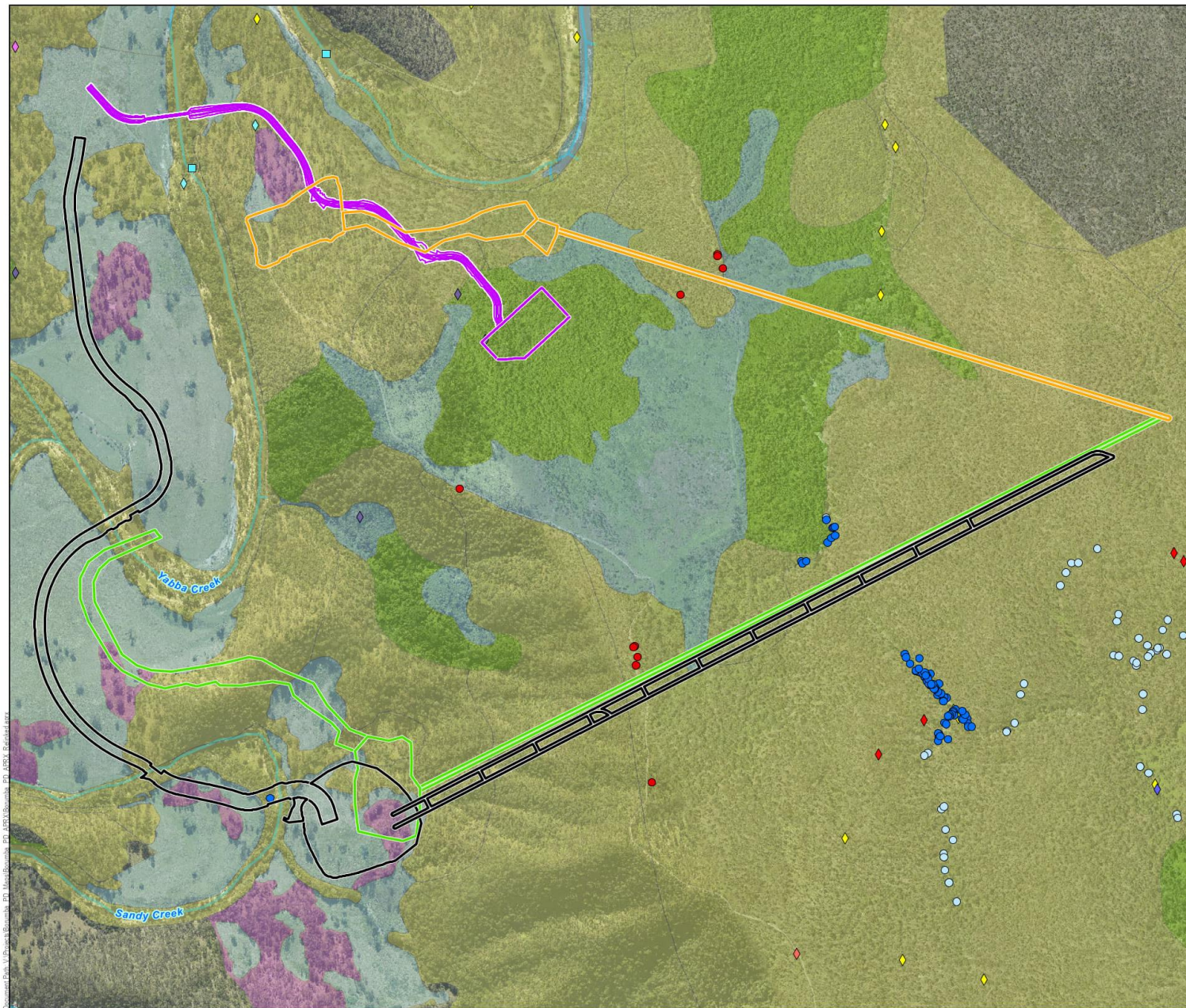
Exploratory works design changes

Since the first EPBC Act* referral, the Project has been reviewed and changed in response to engineering inputs, along with inputs from cultural and environmental investigations. All changes are discussed in detail in the Preliminary Documentation.

*Environment Protection and Biodiversity Conservation Act 1999 (EPBC Act)

- Relocation and revision of the supporting infrastructure
- Inclusion of an option for an alternate exploratory tunnel alignment
- Revision of geotechnical investigations
- Realignment of a section of Bella Creek Road (Kingaham Creek bypass)
- Refinement of spoil areas
- Addition of a civil construction compound
- Refinement of the temporary water infrastructure
- Removal of emergency helipads
- Change to exploratory tunnel design – single to dual tunnels

Portal pad design changes



Relocation of portal pad for the exploratory tunnelling to historically cleared areas, which avoided clearing of **MNES** habitat.


LEGEND


 Watercourses

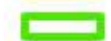
 Tracks

Exploratory Works Project

Access track, portal, and exploratory tunnel


 Current option

 Orange option (Referral 2023/09461)

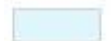
 Green option (Referral 2023/09461)

 Original design (2022)

Ground-truthed threatened ecological communities

 Lowland Rainforest of Subtropical Australia

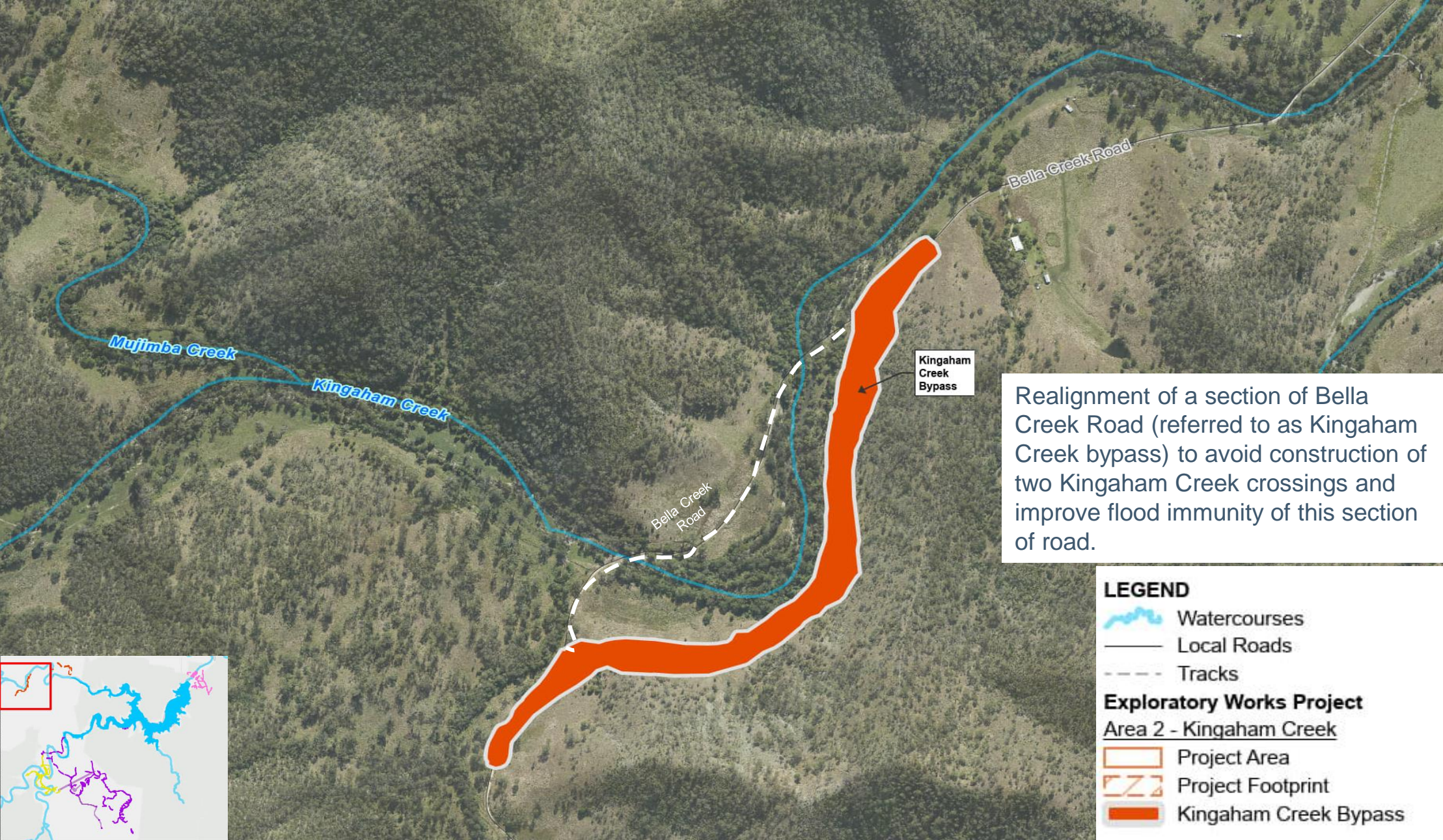
Ground-truthed regional ecosystems

 Non-remnant

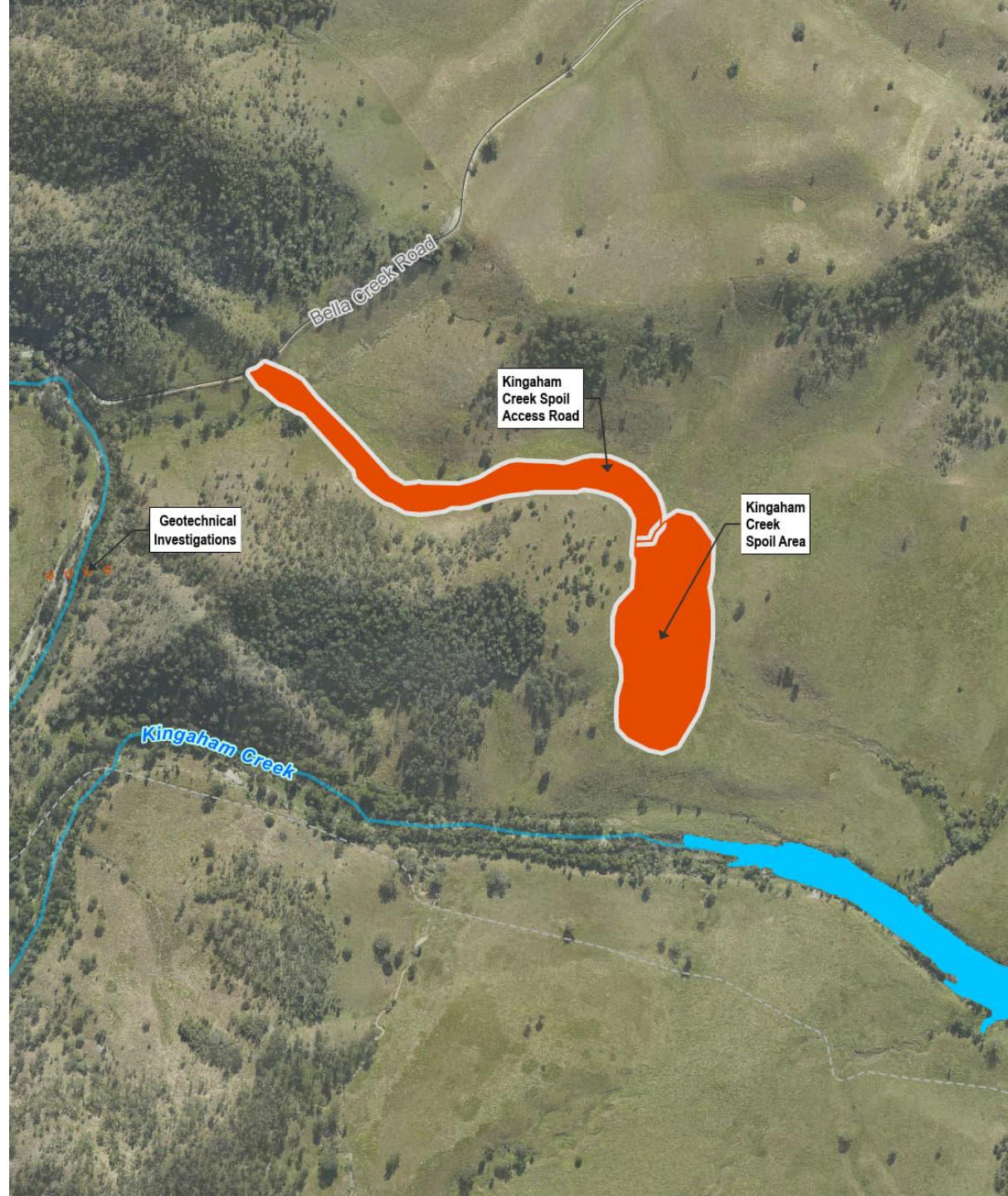
 Regrowth

 Remnant

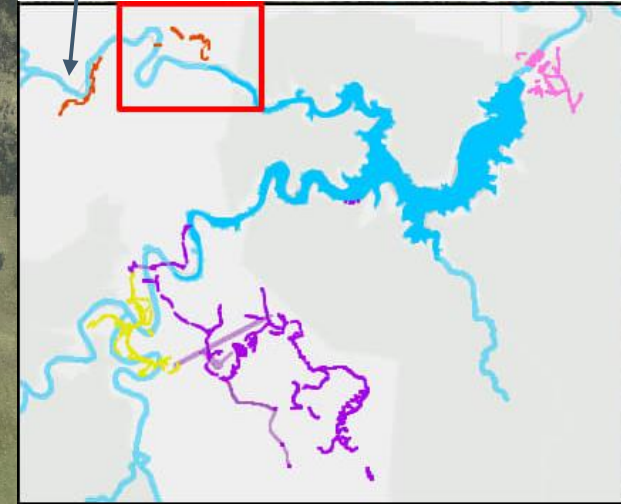
Kingaham Creek Bypass



Kingaham Creek bypass spoil area



Note: Kingaham Creek bypass in relation to spoil area.



LEGEND

- Watercourses
- Local Roads
- Tracks
- Lake Borumba (FSL 135.01m AHD)

Exploratory Works Project

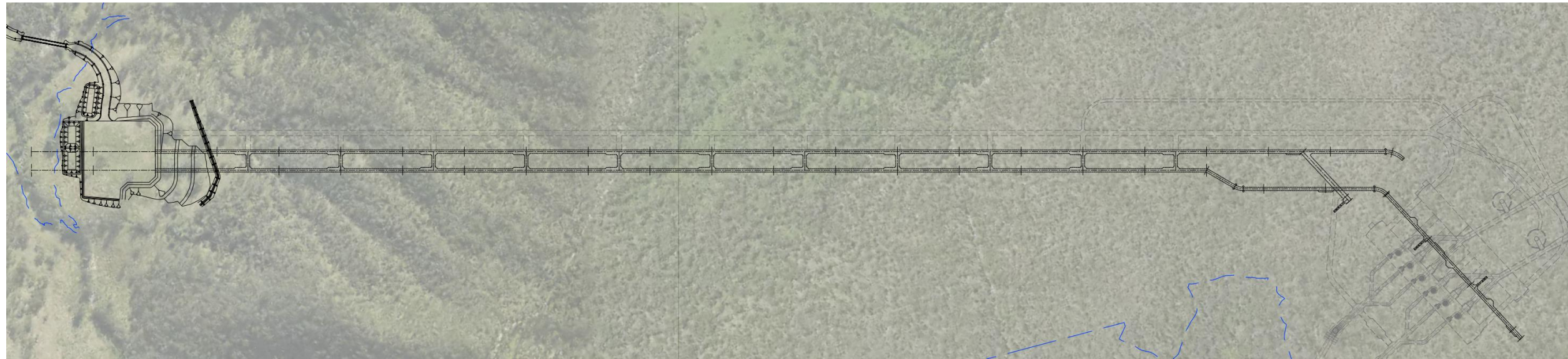
Area 2 - Kingaham Creek

- Project Area
- Project Footprint
- Kingaham Creek Spoil Area and Access Road

Dual exploratory tunnels

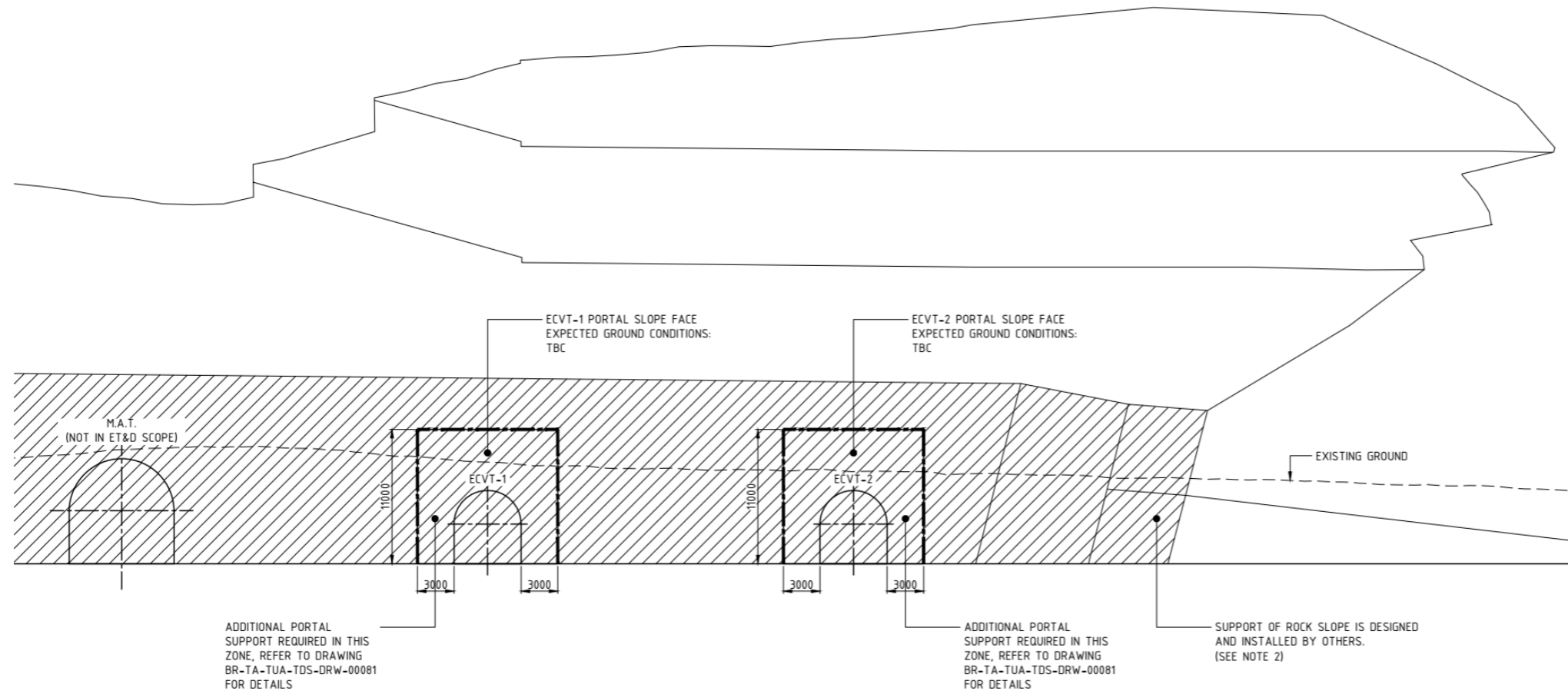
The exploratory tunnel design was refined from a single tunnel to dual tunnels to improve

- Egress
- Ventilation
- Constructability
- Geotechnical stability
- Civil work requirements



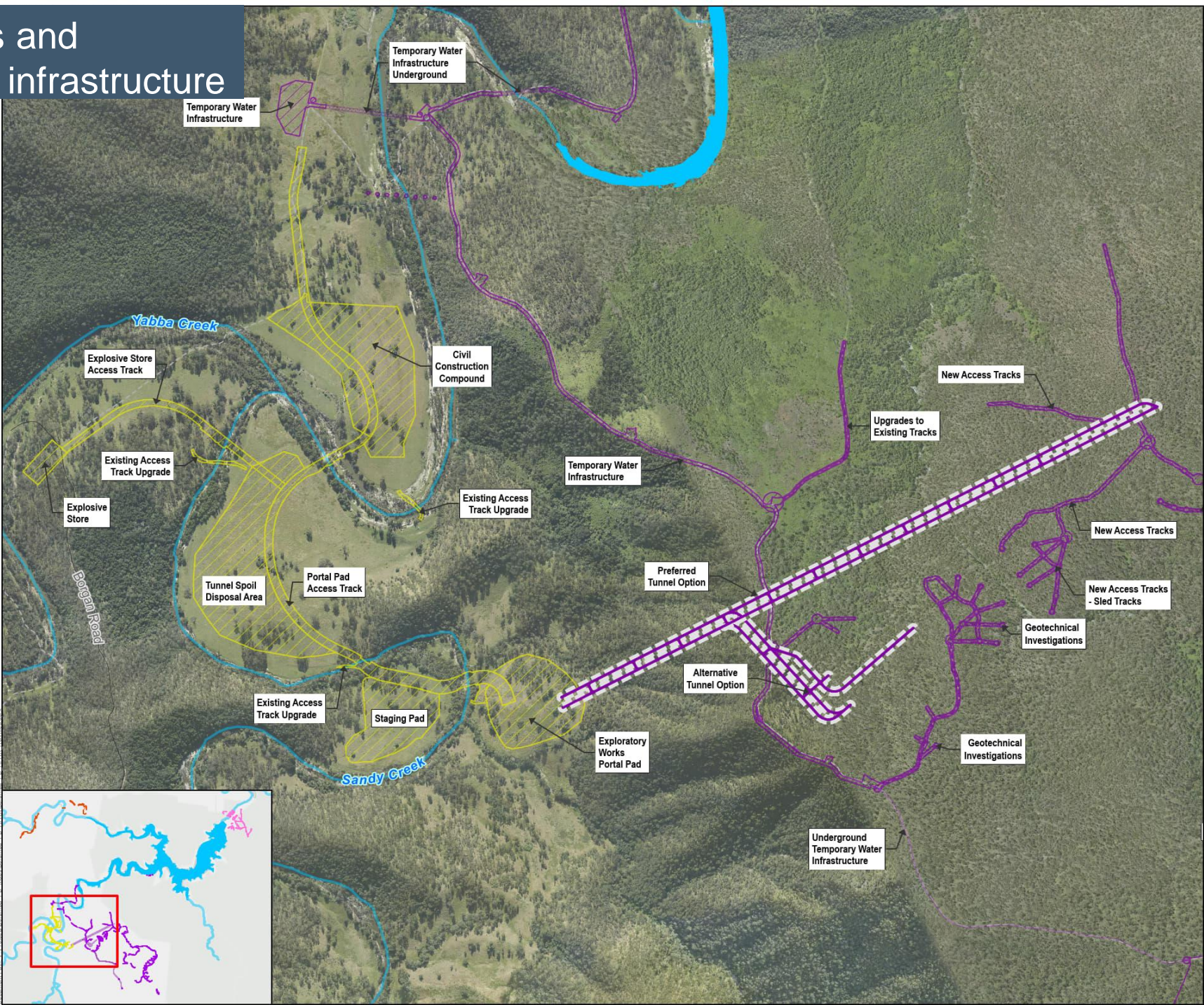
Dual exploratory tunnel required to assess the suitability of the geology for the proposed PHES powerhouse cavern for the main works.

Dual tunnels




- ‘Vent. Tunnel’ and ‘exploratory tunnel’ are approximately 30m horizontally separated.
- The two smaller exploratory works tunnels are 5.5m wide and 6.0m high. The original design had one tunnel which was 8.5m wide and 8.5m high (same as the ‘future MAT’ tunnel profile).
- ‘Future MAT (main access tunnel’ is part of the main works scope and will not be delivered as part of exploratory works.
- The tunnels are a D-shaped design.


Exploratory tunnels and associated surface infrastructure



Document Path: Y:\Projects\Borumba_PN_Main\Borumba_PN_ASYX_Refresh.asx




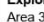


 GDA2020 MGA Zone 56







 1:11,000 (when printed @ A3)

LEGEND



-  Watercourses
-  Local Roads
-  Tracks
-  Lake Borumba (FSL 135.01m AHD)

Exploratory Works Project


Area 3 - Walkers Top

-  Project Area
-  Project Area (Underground)
-  Project Footprint
-  Exploratory Tunnel Options (Underground)


Area 4 - Borgan

-  Project Area
-  Project Footprint

OVERVIEW
Gympie Regional,
Somerset Regional,
Sunshine Coast Regional



OVERVIEW Queensland



WEIPA, CAIRNS, TOWNSVILLE, JACKAY, ROCKHAMPTON, BRISBANE

NT, QLD, SA, NSW

Main Map Extent

Data Sources:

1. State controlled roads - Queensland © State of Queensland (Department of Transport and Main Roads) 2020
2. Site Layout Items © SMEC/ GHD / AFRY 2022-2023
3. Watercourses © State of Queensland (Department of Natural Resources, Mines and Energy) 2022
4. Cadastre © State of Queensland (Department of Natural Resources, Mines and Energy) 2024
5. Geomaps World Light Gray Canvas Base © Esri, HERE, Garmin, (c) OpenStreetMap contributors, and the GIS user community

Disclaimer:

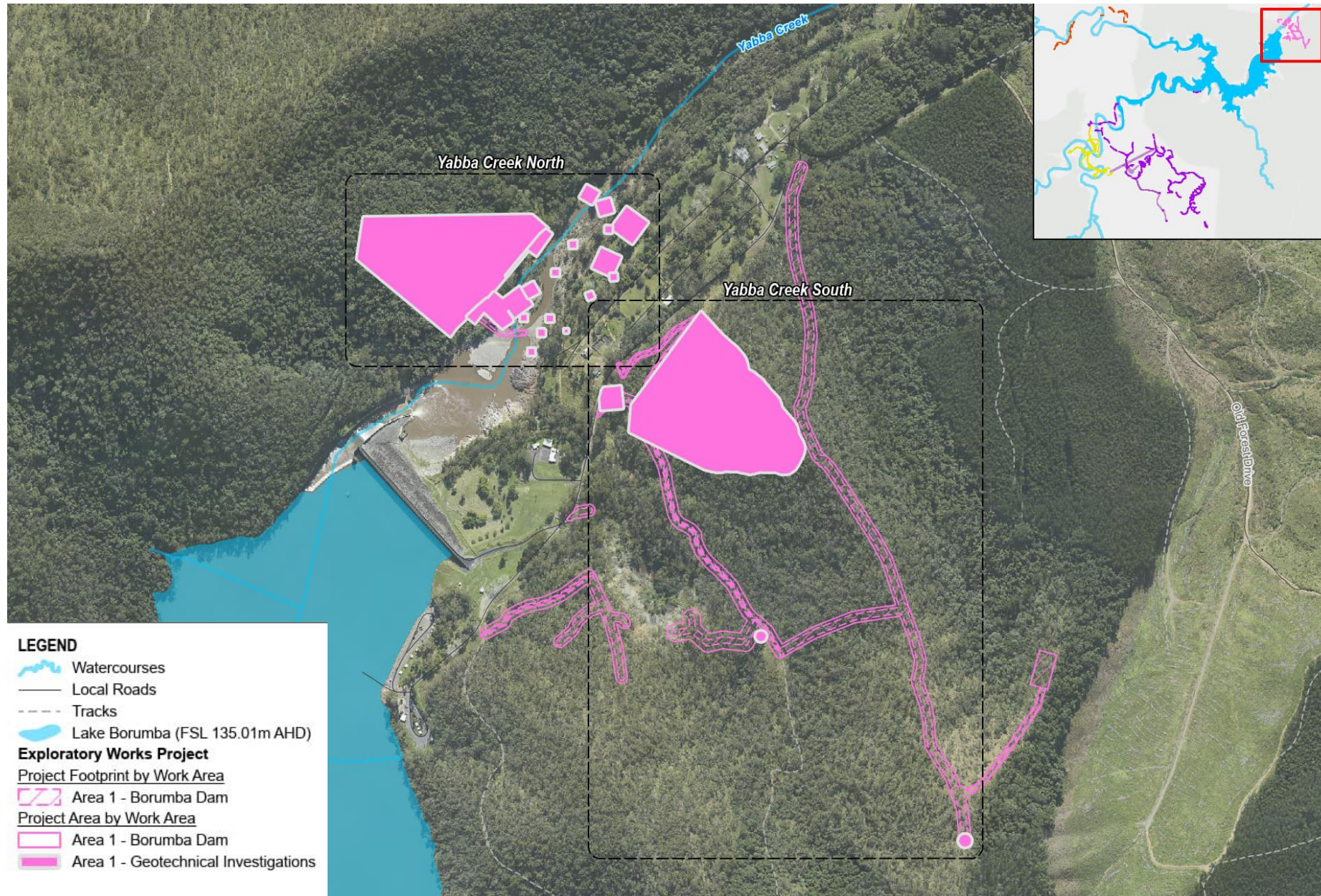
© SMEC Australia Pty Ltd 2024. All Rights Reserved. While all reasonable care has been taken to ensure the information contained on this map is up to date and accurate, this map contains data from a number of sources - no warranty is given that the information contained on this is free from error or omission. Any reliance placed on such information shall be at the sole risk of the user. Please verify the accuracy of all information prior to using it. This map is not a design document. SMEC shall bear no responsibility or liability for any errors, faults, defects, or omissions in the information.

Exploratory Works Project Preliminary Documentation

EXPLORATORY TUNNELS AND ASSOCIATED SURFACE INFRASTRUCTURE (AREA 3 - WALKERS TOP AND AREA 4 - BORGAN)

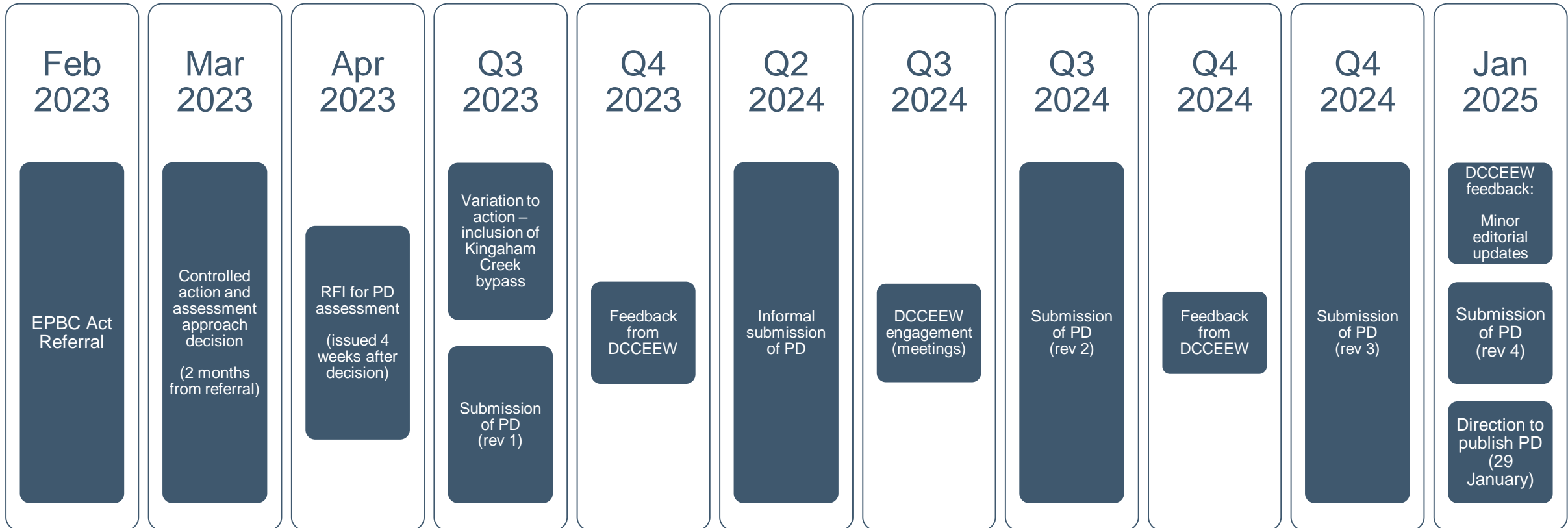
PROJECT #:	30032677/30032772	FIGURE 18
CREATED BY:	BM	
LAST MODIFIED:	NC17428, 15/01/2025	
REVISION:	F	

Lower dam geotechnical investigations



Preliminary documentation for exploratory works

Preliminary Documentation Process



Note:
 EPBC - Environment Protection and Biodiversity Conservation Act 1999 (EPBC Act)
 PD – Preliminary Documentation
 RFI – Request for Information
 DCCEEW – Department of Climate Change, Energy, the Environment and Water

Preliminary Documentation

Section 1 - Overview

- Project background, related actions, EPBC referral and assessment
- Threatened species listings
 - in accordance with the EPBC Act, the PD assesses species as per listing status at the time of the controlled action decision
 - migratory species that are also listed threatened species are not assessed – migratory species are not a controlling provision
- Likelihood of occurrence
 - assessment has been updated based on information and feedback since the referral
- Content and structure – Table 2 of the PD report

Section 2 – Description of the Project

- Project overview (section 2.2)
 - Project area, schedule, traffic
- Description of Project works
 - Includes description of construction, operation and decommissioning
- Decommissioning
 - Decommissioning and Rehabilitation Strategy provided in Appendix C of the PD
 - PD assumes that the Exploratory Works are a standalone project

Preliminary Documentation

Section 1 - Overview

- Project background, related actions, EPBC referral and assessment
- Threatened species listings
 - in accordance with the EPBC Act, the PD assesses species as per listing status at the time of the controlled action decision
 - migratory species that are also listed threatened species are not assessed – migratory species are not a controlling provision
- Likelihood of occurrence
 - assessment has been updated based on information and feedback since the referral
- Content and structure – Table 2 of the PD report

Section 2 – Description of the Project

- Project overview (section 2.2)
 - Project area, schedule, traffic
- Description of Project works
 - Includes description of construction, operation and decommissioning
- Decommissioning
 - Decommissioning and Rehabilitation Strategy provided in Appendix C of the PD
 - PD assumes that the Exploratory Works are a standalone project

Preliminary Documentation

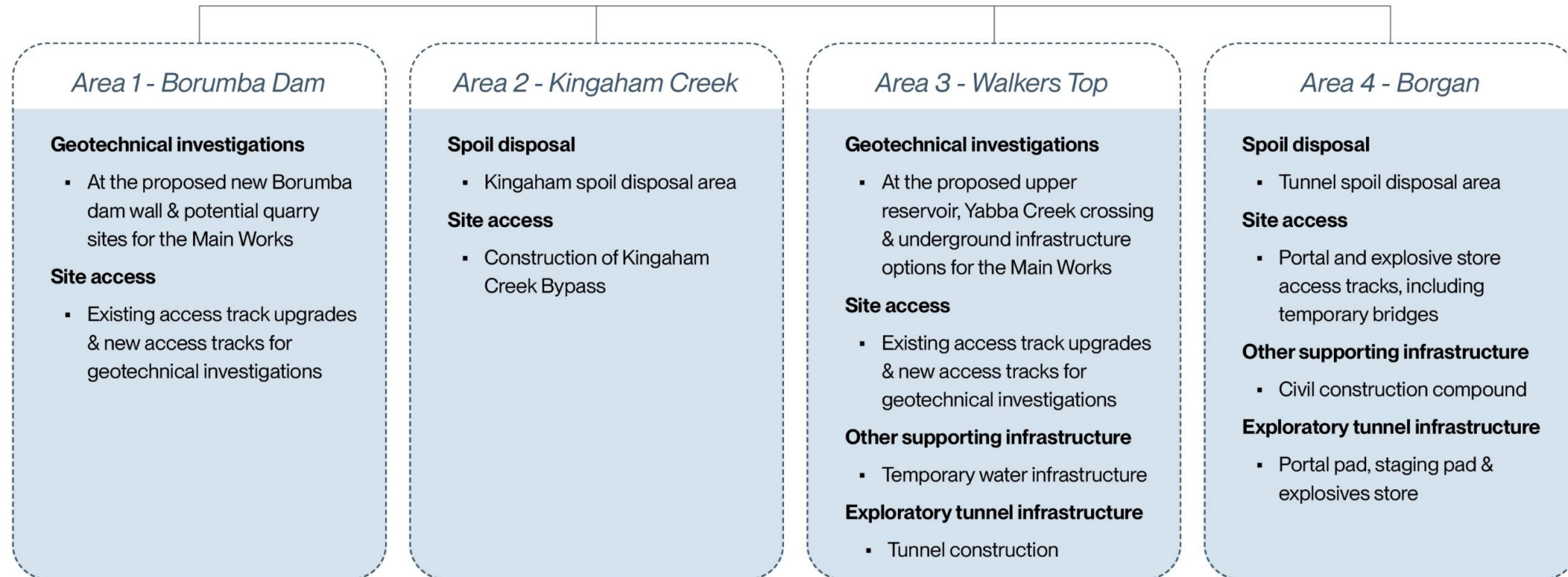
Section 2 – Project Definition



Section 2 – Project Definition



Work areas and associated activities:



Preliminary Documentation

Section 3 - Description of the environment

This section describes the baseline condition for a range of aspects based on desktop assessment & field data.

- 3. Description of the environment – RFI item 3.2
 - 3.1 Project locality
 - 3.2 Land use
 - 3.3 Native Title and cultural heritage
 - 3.4 Topography
 - 3.5 Geology
 - 3.6 Climate
 - 3.7 Surface and ground water
 - 3.8 Connectivity
 - 3.9 Vegetation communities
 - 3.10 Threats to MNES – RFI item 4.5(e)

Section 4 – Matters of National Environmental Significance

- Survey methods and effort (section 4.1)
- Threatened Ecological Communities (TECs) (section 4.2.1.1)
- Terrestrial flora (section 4.2.1.2)
- Terrestrial fauna (section 4.2.1.3)
- Aquatic flora and fauna (section 4.2.1.4)
- Likelihood of occurrence (section 4.3)

Preliminary Documentation

Section 4 - Threatened ecological communities (TECs) and threatened flora known or likely to occur within the Exploratory Works Survey area (Tables 27 & 28)

Threatened ecological community (TEC)	EPBC status
Known	
Lowland Rainforest of Subtropical Australia	Critically endangered
Subtropical eucalypt floodplain forest and woodland of the New South Wales North Coast and South East Queensland bioregions	Endangered

Common name	Scientific name	EPBC status
Known		
Ball nut	<i>Floydia praealta</i>	Vulnerable
Brush sophora	<i>Sophora fraseri</i>	Vulnerable
-	<i>Coleus torrenticola</i> (syn. <i>Plectranthus torrenticola</i>)	Endangered
Native guava	<i>Rhodomyrtus psidioides</i>	Critically endangered
Scrub turpentine	<i>Rhodamnia rubescens</i>	Critically endangered
Likely		
-	<i>Coleus omissus</i> (syn. <i>Plectranthus omissus</i>)	Endangered
Macadamia nut	<i>Macadamia integrifolia</i>	Vulnerable
Small-fruited Queensland nut	<i>Macadamia ternifolia</i>	Vulnerable
Three-leaved Bosistoa	<i>Bosistoa transversa</i>	Vulnerable

Note: possible to occur species listed in documentation

Preliminary Documentation

Section 4 - Threatened fauna known or likely to occur within the Exploratory Works Survey area (Table 29)

Common name	Scientific name	EPBC status
Known		
Australian lungfish	<i>Neoceratodus forsteri</i>	Vulnerable
Black-breasted button-quail	<i>Turnix melanogaster</i>	Vulnerable
Glossy black-cockatoo (south-eastern)	<i>Calyptorhynchus lathami lathami</i>	Vulnerable
Greater glider (southern and central)	<i>Petauroides volans</i>	Endangered
Grey-headed flying-fox	<i>Pteropus poliocephalus</i>	Vulnerable
Koala (combined populations of Qld, NSW, and the ACT)	<i>Phascolarctos cinereus</i>	Endangered
Long-nosed potoroo (northern)	<i>Potorous tridactylus tridactylus</i>	Vulnerable
Mary River cod	<i>Maccullochella mariensis</i>	Endangered
Mary River turtle	<i>Elusor macrurus</i>	Critically endangered
White-throated snapping turtle	<i>Elseya albagula</i>	Critically endangered
Yellow-bellied glider (southern subsp.)	<i>Petaurus australis australis</i>	Vulnerable
Likely		
Giant barred frog	<i>Mixophyes iteratus</i>	Vulnerable

Note: possible to occur species listed in documentation

Preliminary Documentation

Section 5 – Impact Assessment

- Potential impacts (section 5.1)
 - risk assessment in accordance with the Environmental Management Plan Guidelines (DCCEEW, 2024).
 - provided in Appendix H
- Direct (section 5.2)
 - summary of footprint and associated vegetation clearing in Table 32.
- Indirect (section 5.3)
 - E.g. fragmentation, edge effects, erosion & sedimentation, water quality.
- Facilitated (section 5.4)
 - As per the Significant Impact Guidelines
- Cumulative (section 5.5)
- Unknown / unpredictable (section 5.6)
- Habitat and impact maps
 - provided in Appendix E

Extent of vegetation in the Borumba PHES Survey area and impacted by the Project footprint (Table 33)

Vegetation Type	Vegetation Extent (ha)		
	In the Borumba PHES Survey area	Impacted by the referral design	Impacted by the Project footprint
Total native vegetation	3,352.5	79.8	36.7
Native vegetation that is a TEC	644.3	2.9	2.5
<i>Subtropical eucalypt floodplain forest and woodland TEC</i>	14.0	0	0
<i>Lowland Rainforest of Subtropical Australia TEC</i>	630.3	2.9	2.5
Non-remnant	1,211.7	4.0	48.1
Plantation	47.45	0.1	0.0
Total vegetation (native + non-remnant + plantation)	4,611.7	83.9	85.1*

Preliminary Documentation

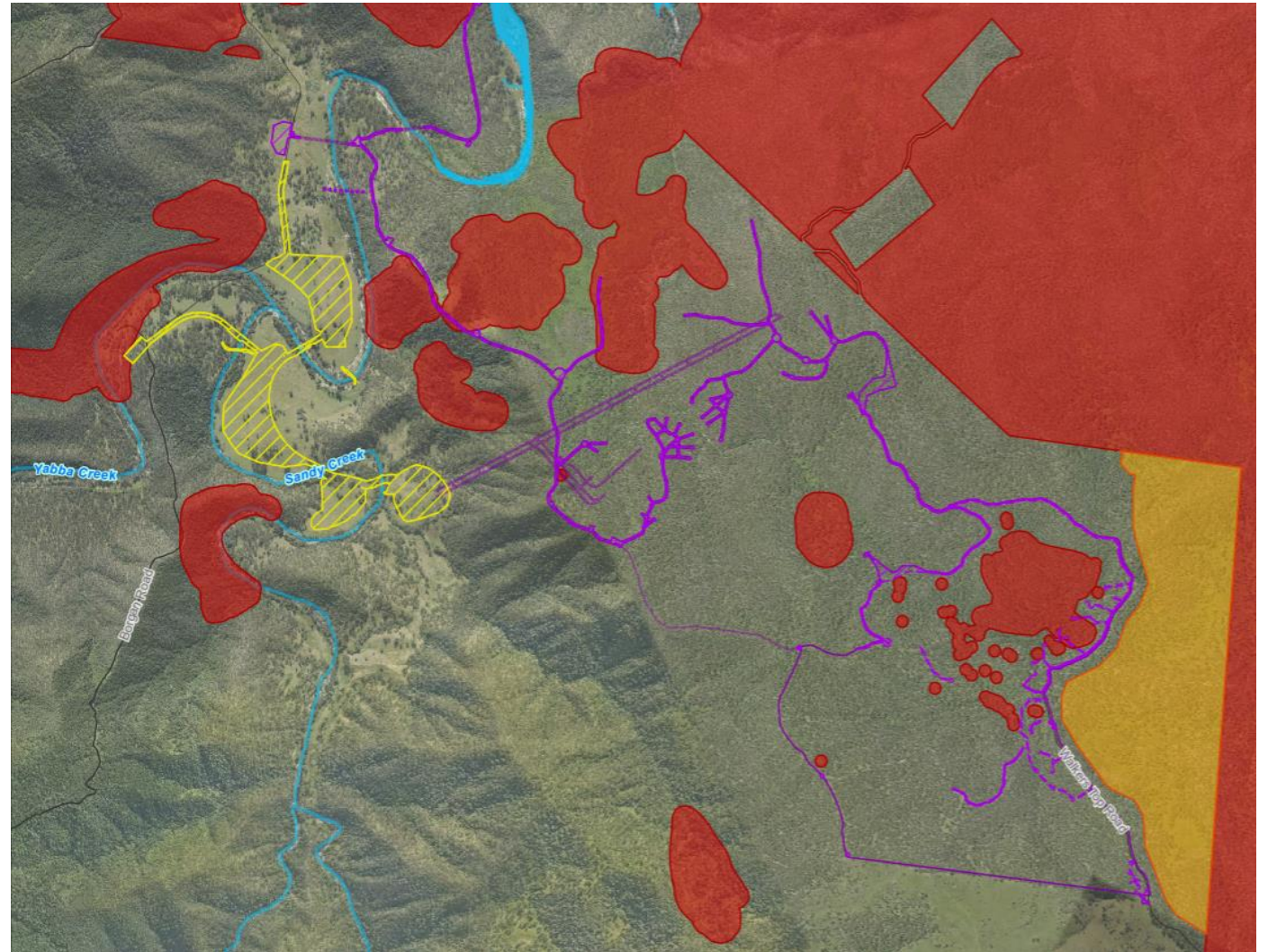
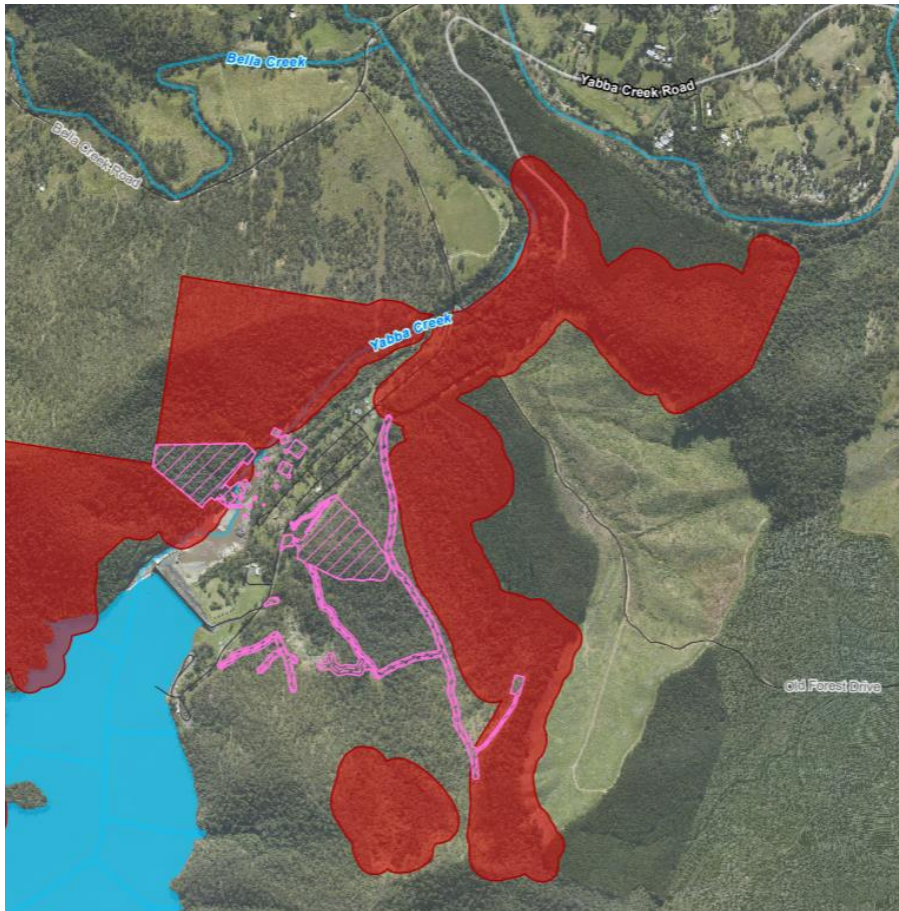
Section 6 - Avoidance, mitigation and management measures

Queensland Hydro implemented the mitigation hierarchy (avoid, minimise, mitigate, restore).

- Avoidance (section 6.1)
 - identifies activities that have flexibility in siting and those that have limited flexibility
 - discusses co-location of works, alternate designs for exploratory works, refinement of requirements and approach
- Mitigation and management (section 6.2)
 - management plans prepared for the works are identified in section 6.2.1 and provided in Appendix F.
 - likelihood of success of the management measures was assessed qualitatively.
 - all management measures were assessed as having a moderate or high likelihood of success.
 - management plans include standard environmental impact management measures and monitoring measures in accordance with best practice.
 - how exclusion and buffer zones and fauna exclusion fencing will mitigate impacts on specific MNES (sections 6.2.3 & 6.2.4)
 - measures to manage the spread of Myrtle Rust (section 6.2.5)
 - the tree hollow replacement strategy developed to provide additional nesting and denning habitat (section 6.2.6)
 - spoil disposal, water quality management, and groundwater drawdown (sections 6.2.7 to 6.2.10).

Preliminary Documentation

Exclusion zones (Figure 49)



Preliminary Documentation

Section 7 – Significant Impact Assessment

- TECs and species known and likely to occur presented in section 7.
- Species that possibly occur presented in Appendix J.
- Section 7 split into TECs (section 7.1), flora (section 7.2), fauna (section 7.3)
- For each TEC / species three tables are provided:
 - first table - information on the species / TEC, (e.g. habitat description, diagnostic criteria, current known distribution, condition threshold, previous desktop records, a definition of habitat critical to the survival of the species, important populations, and threats)
 - second table - assessment of the potential impacts and the suite of mitigation measures developed for the Project.
 - third table - assessment against the significant impact criteria for species listing category.

Preliminary Documentation

Section 7 - Significant Impact Assessment

Summary of species with a significant residual impact and proposed offset approach (Table 106)

Common name	Scientific name	EPBC Act status	Extent of habitat to be cleared (ha)	Offset Delivery approach
Threatened ecological community				
Lowland Rainforest of Subtropical Australia	N/A	Critically endangered	2.5	Land-based
Threatened flora				
Brush sophora	<i>Sophora fraseri</i>	Vulnerable	0.2	Land-based
Scrub turpentine	<i>Rhodamnia rubescens</i>	Critically endangered	0.5	Compensatory measures
Threatened fauna				
Black-breasted button-quail	<i>Turnix melanogaster</i>	Vulnerable	0.2	Land-based
Glossy black-cockatoo (south-eastern)	<i>Calyptorhynchus lathami lathami</i>	Vulnerable	27.5	Land-based
Greater glider (southern and central)	<i>Petauroides volans</i>	Endangered	33.9	Land-based
Koala (Combined pop. of QLD, NSW, ACT)	<i>Phascolarctos cinereus</i>	Endangered	34.1 and 48.4 (shelter/dispersal)	Land-based
Long-nosed potoroo (northern)	<i>Potorous tridactylus tridactylus</i>	Vulnerable	36.8	Land-based
Yellow-bellied glider (southern Subspecies)	<i>Petaurus australis australis</i>	Vulnerable	34.1	Land-based

Preliminary Documentation

Section 8 – Proposed Offsets

Section 9 – Habitat Quality Assessment

- Offset Area Management Plan (OAMP) provided in Appendix I
- Environmental offsets for the Exploratory Works Project will primarily be delivered through land-based offsets in two offset areas
- For scrub turpentine, 100% of the offset requirement will be delivered through compensatory measures due to significant threats posed by Myrtle Rust (refer to Appendix of the OAMP)
- Habitat quality assessments were undertaken in the impact areas and proposed offset areas in accordance with
 - Guide to determining terrestrial habitat quality – Methods for assessing habitat quality under the Queensland Environmental Offsets Policy Version 1.2.
 - the modified habitat quality assessment (MHQA) developed by DCCEEW.

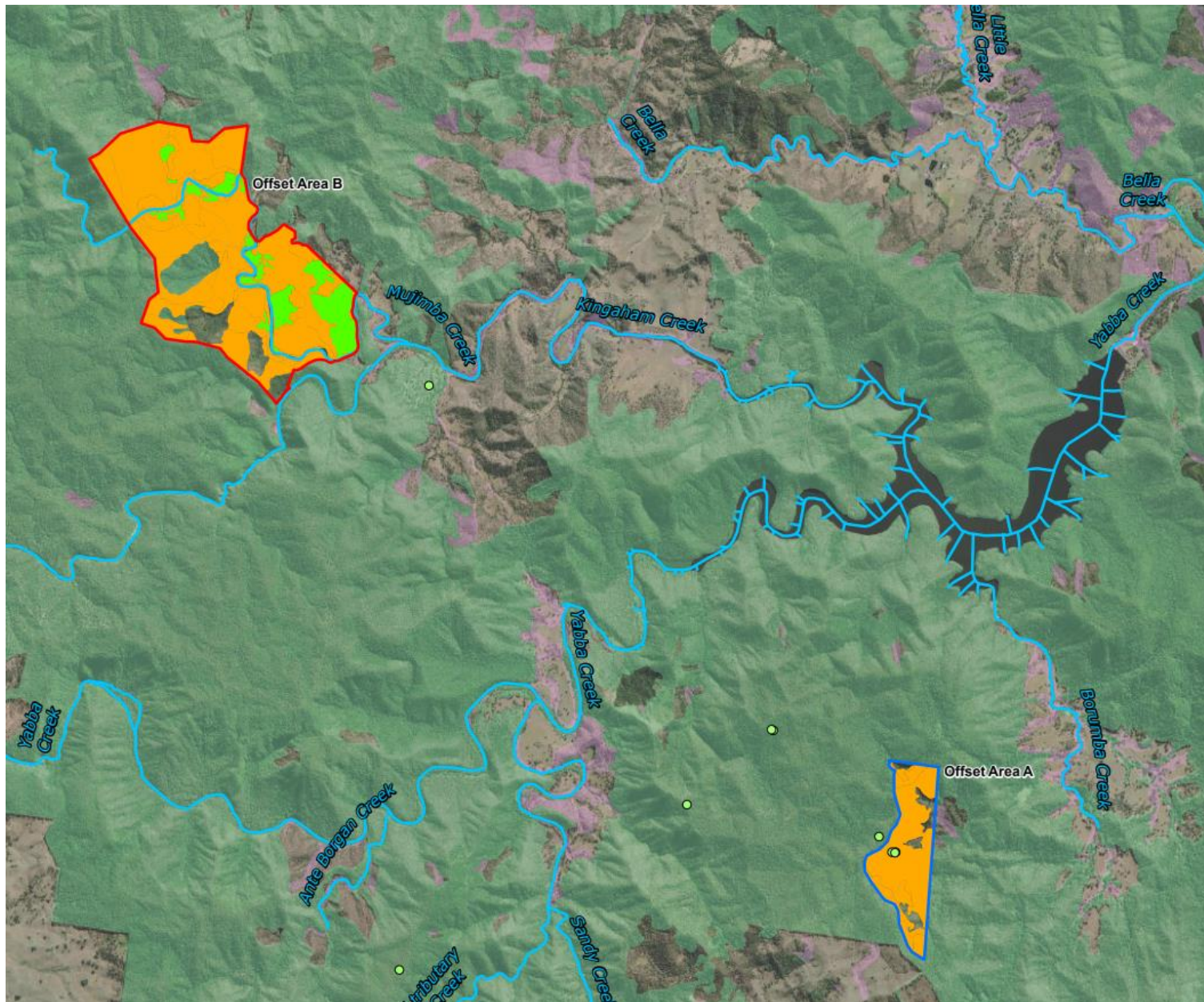
Preliminary Documentation

Offsets delivery and management

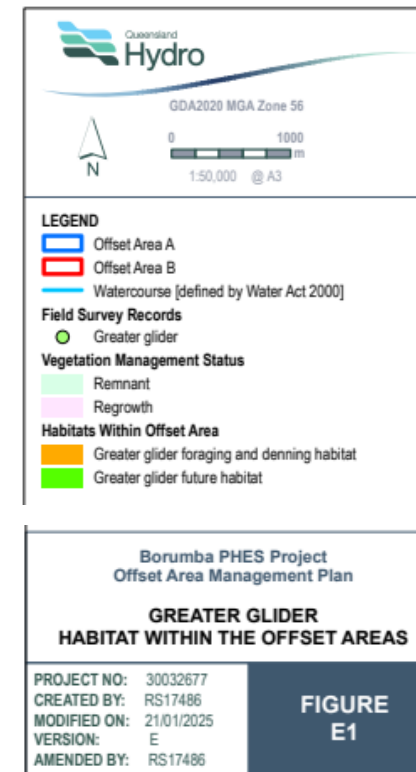
- Section 4 of the OAMP provides information on the habitat quality assessment
- Section 6 of the OAMP describes the management actions proposed for the offset areas
- Section 7 of OAMP provides interim milestones
- Section 8 describes proposed monitoring for offset sites

Summary of impact area and offset areas

MNES	Extent of habitat to be cleared (ha)	Offset Area A Habitat extent and % acquitted		Offset Area B Habitat extent and % acquitted		Offset Area - Total Habitat extent and % acquitted	
		Habitat extent (ha)	% Acquitted	Habitat extent (ha)	% Acquitted	Habitat extent (ha)	% Acquitted
Lowland Rainforest TEC	2.5	14.77	36.25%	40.89	100.29%	55.66	136.54%
Brush sophora	0.2	122.48	18,829%	-	N/A	122.48	18,829%
Glossy black-cockatoo	27.5	107.7	39.98%	512.53	190.44%	620.23	230.42%
Greater glider	33.9	107.7	30.39%	512.53	144.75%	620.23	175.14%
Yellow-bellied glider	34.1	107.7	36.85%	512.53	175.36%	620.23	212.21%
Koala (foraging/shelter)	34.1	107.7	26.44%	441.16	108.28%	548.86	134.72%
Koala (dispersal)	48.4	14.77	9.62%	140.21	91.28%	154.98	100.90%
Black-breasted button-quail	0.2	14.77	861.62%	68.84	4015%	83.61	4876.62%
Long-nosed potoroo	36.8	122.48	38.83%	581.37	184.32%	703.85	223.15%



Appendix E of the OAMP provides offset area figures for each species, with species records.



Other Preliminary Documentation sections and appendices

- Economic and social matters – section 10
- Ecologically sustainable development – section 11
- Environmental record – section 12
- Ecological data provision – section 13

Appendix A Request for Information – 24 April 2023	486
Appendix B Groundwater Impact Assessment	487
Appendix C Decommissioning and Rehabilitation Strategy	488
Appendix D Likelihood of Occurrence	489
Appendix E Species Observations and Habitat	508
Appendix F Construction Environmental Management Plan	509
Appendix G Water Quality Risk Assessment	510
Appendix H Risk Assessment for Impacts to Threatened Species	511
Appendix I Offset Area Management Plan	512
Appendix J Significant impact assessments of MNES with potential to occur	513
Appendix K Terrestrial ecology technical reports	527
Appendix L Aquatic ecology technical reports	528
Appendix M Survey methodology and results	529
Appendix N Protected Matters Search Tool results	556

Preliminary Documentation – EPBC Act approval

Public Display

- DCCEEW directs a public display period of 15 business days.
- Public comment period will run from **Friday 14 February 2025 to midday Monday 10 March 2025**.

Where to view the Preliminary Documentation

- Queensland Hydro website (online),
- Imbil and Kilcoy public libraries and State Library in Brisbane (hard copy)
- Queensland Hydro Project office – 6 Imbil Island Road (online and hard copy)
- Further support will be provided for those who identify as sight or vision-impaired.

How to have your say

- Public comments to be made to Queensland Hydro NOT DCCEEW via:
 - **Online submission** via Queensland Hydro website
 - **Email** via borumba@qldhydro.com.au
 - **In writing** to PO Box 12278, Brisbane QLD 4000

Need help?

- **Imbil Project Office:** the Stakeholder Engagement team will be in the Imbil Project Office during the public display period from Monday to Friday, 9am to 4pm and until 7pm on Thursdays to assist the community with making comments. The office will also be open on one Saturday morning during the display period. Further information will be provided to the community.
- **By phone:** 1800 433 939
- **By email:** borumba@qldhydro.com.au

Preliminary Documentation – EPBC Act approval

What happens next?

Once the public comment period closes, Queensland Hydro will directly address comments and issues made and provide DCCEEW with:

- A copy of all public comments received,
- A summary of comments and how we have addressed each one,
- A revised version of the PD with any changes or additions needed to take account of the public comments.

A summary of public comments and responses, along with the original documentation will be published on our website.

Who makes the decision or gives approval?

DCCEEW assesses the documents, and the Federal Minister for the Environment and Water (or authorised delegate) will make a determination, which could be to approve the project, approve the project with conditions or to not approve the project.

Online submission and map (demo)

Project update

Project update

Reforecast report

- Discussed revised cost and schedule with the new Queensland Government
- Reforecast cost to \$18.4 billion (an increase of \$4.2 billion).
- First power extended to July 2033, 26 months later than the original target.
- Queensland Hydro began looking for opportunities to optimise the Borumba Project design.

Optimisation opportunities

- Queensland Hydro has established a team to assess the current design to determine if any optimisations of the design can deliver cost and schedule certainty and further reduce any potential impacts, while maintaining the ability to deliver the critical energy storage.
- Taking the opportunity to consider the feedback we have received from a range of stakeholders during the assessment of the current design.

Optimisation outcome

- Queensland Hydro is working with the Government during these investigations.
- Stakeholders will be informed once an outcome of design optimisation has been reached.

Business as usual

- Planned exploratory works for the Borumba Project and our progress on securing approvals for these activities continues.
- Exploratory works activities will inform the ongoing development and final design of the Borumba Project.

Community update

Community grants program: Round 1, 2024

Round 1 open
for 6 weeks:
Sept-Oct

58 applications
received

Eligibility check
completed by
independent
assessor

3 applications
deemed
ineligible

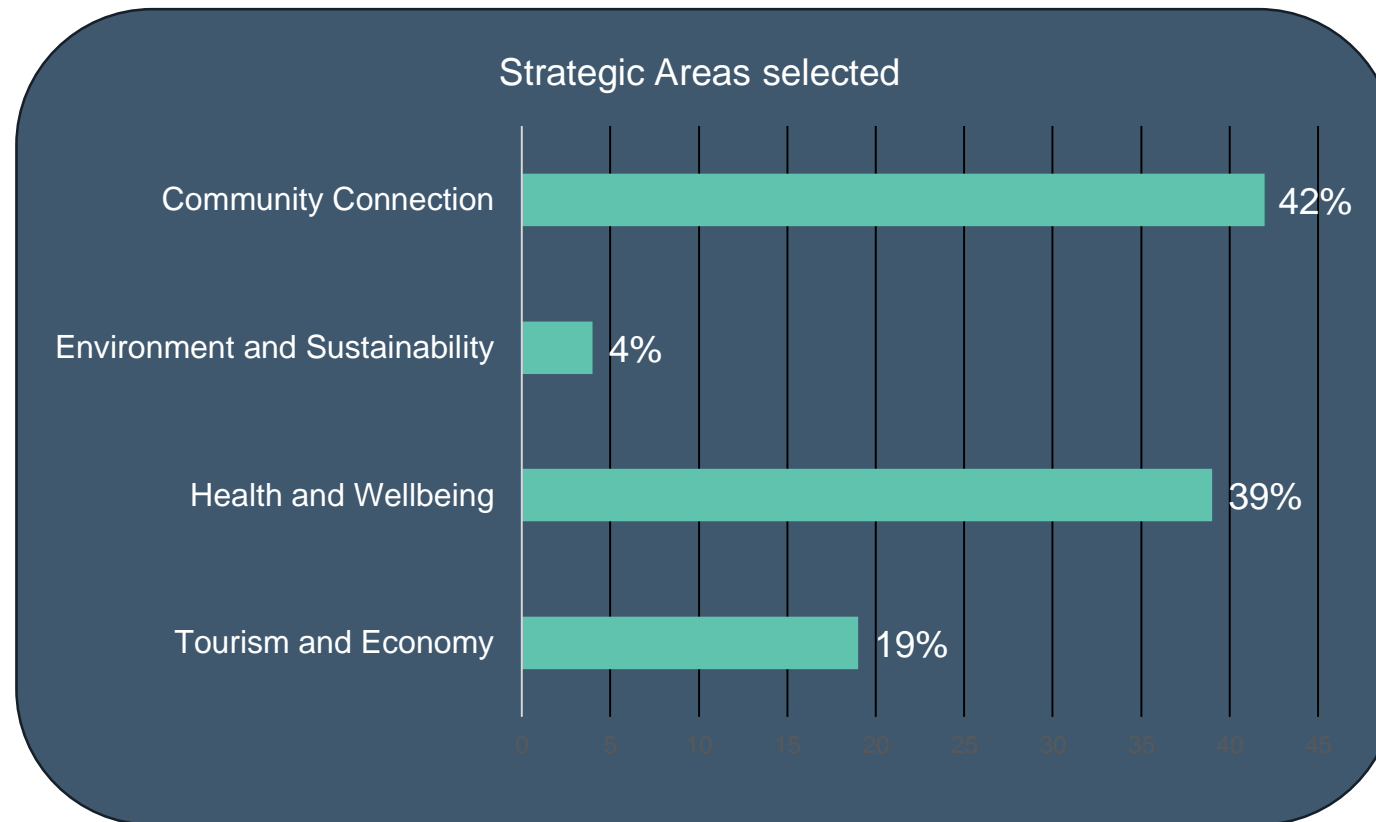
55 grants
assessed by
Community
Benefits Panel

11 shortlisted
applications
recommended by
Panel

Round 1 outcomes: Strategic priority areas

Total funds requested = \$521,385

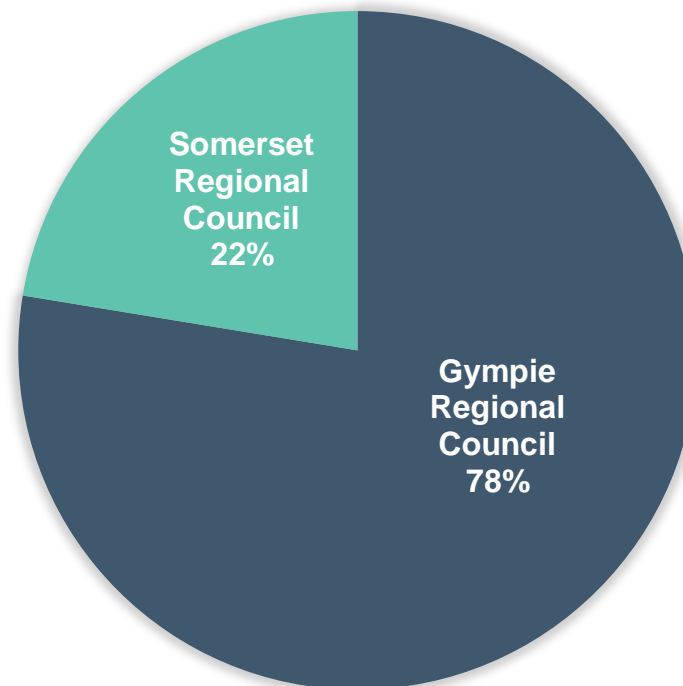
Round 1 investment committed = \$100,000



Round 1 outcomes: Location of community initiatives

13 applications from Somerset LGA:

- 7 from Jimna
- 2 from Kilcoy
- 1 Glamorgan Vale
- 1 from Esk
- 1 from Mt Stanley
- 1 from general Somerset region



45 applications from Gympie LGA:

- 19 from Imbil and surrounds
- 18 from Gympie
- 5 from general Gympie region
- 1 from Glanmire
- 1 from Theebine
- 1 from Widgee

Community Benefits Panel – Assessment process



Detailed briefing on the Community Benefits Framework, assessment criteria and scoring matrix.



Review and assessment of each application, individual scores applied.



Collated scores produced an initial shortlist. Panel members discussed each application, applied their local knowledge and expertise.



A prioritised final shortlist of recommended applicants was agreed.

Assessment criteria and scoring matrix

Categories	Assessment criteria
<p>Strategic fit Alignment to community benefits values and strategic objectives</p>	<p>Strategic priority – Tourism and economy Would this initiative foster tourism or other local economy growth?</p>
	<p>Strategic priority – Health and wellbeing Would this initiative enhance quality of life?</p>
	<p>Strategic priority – Environment and sustainability Would this initiative enhance, protect or celebrate the local environment?</p>
	<p>Strategic priority – Community connection Would this initiative foster community connection?</p>
<p>Community value Direct, meaningful, local benefits</p>	<p>Benefits What direct and meaningful community benefits would this initiative achieve? Does it meet specific needs in the region? Does it create local opportunities?</p>
<p>Deliverability Practical execution Effective delivery</p>	<p>Execution plan Does the initiative have an effective delivery approach? (feasible time, budget, resources)</p>
	<p>Delivery approach How would the initiative and any delivery risks be managed? (clear objectives, accountabilities)</p>

Community grants program: Round 1, 2024

3 grants
recommended for
Sponsorship
Program

Applicants were encouraged to redirect their submission through the Sponsorship Program for event support:

- QH00021G – Gympie Science & Engineering Challenge 2025
- QH00037G – 150th Anniversary Community Celebration (Esk State School)
- QH00058G – Gympie Industry and Careers Showcase 2025

2 grants
recommended for
Partnership
Program

Endorsement sought to pursue a Partnership Program with the following applicants, which may see additional investment due to leveraging greater community outcomes. Discussions are underway:

- QH00059G – Mary Valley Arts and Cultural Hub, Imbil (ArtsLink)
- QH00026G / 40G / 41G – Jimna Community Development package

3 initiatives
delivered within
Regional
Development
scope

The following applications are for initiatives that are being delivered within the Regional Development scope of work:

- QH00024G – Mary Valley Chamber of Commerce tourism map
- QH00033G – Mary Valley Chamber of Commerce tourism website
- QH00055G – Mary Valley Show Society air conditioning in the Imbil Hall

Successful grant recipients: Round 1, 2024

Applicant	Initiative	Funding (ex GST)
Imbil Swimming Pool	Community Swimming Volunteer Training and Supervision Support	\$8,000
Jimna Community Development Association (JCDA)	Supply and Installation of a Community First Aid Kit and AED in the Jimna Community Hall	\$2,800
Jimna Community Development Association (JCDA)	Empowering Jimna Community through Comprehensive First Aid Training	\$5,500
Dagun Community Group Inc	Community Creation of Precinct Murals and Soundscape	\$10,000
Imbil Community & Sports Club Inc	Enabling Community Workshop Connectivity (conferencing equipment)	\$8,109
Mt Stanley Muster Inc	Ambulant Accessible Toilet Block	\$9,850
Kilcoy Gymnastics Club Inc	Improving Flooring at Toogoolawah Campus	\$10,000
Perseverance Street Theatre Company	Gympie Youth Theatre Project	\$10,000
Kandanga & District Amateur Swimming Club Inc	Community Gym Equipment	\$10,000
Australian Institute of Country Music	Solar Panel Installation	\$10,000
Mary Valley RSL Sub-Branch	Wellbeing Car Service for Mary Valley Residents	\$10,000

Community grants program in 2025

- Round 2 of the Community Grants Program expected to commence March 2025, after the Preliminary Documentation public comment period has concluded
- Minor updates to the application process – informed by Community Benefits Panel lessons learned process
- Community Benefits Panel – 2 new members to be recruited
- External independent assessment of eligibility and due diligence
- Round 2 successful applicants expected mid 2025
- Round 3 expected to commence August 2025.

Imbil GP Clinic

- Fit-out of the GP clinic is underway at 6 Imbil Island Road.
- Imbil Medical Centre will be opening on Thursday 27 February 2025.
- Locals will be able to book appointments from 17 February 2025.
- Initial operations will have a GP visiting the clinic on Tuesdays and Thursdays from 9:00am – 4:00pm and scaling up as demand increases.
- The Imbil Medical Centre is owned and operated by the same GPs as the Channon Street Medical Centre and Southside Medical Centre in Gympie.
- The Imbil Medical Centre are setting up a website which will have additional information for patients.



GP Clinic and Queensland Hydro Office, 6 Imbil Island Road

Lambert Hyne Drive additional car parking

- In preparation for the return of GP services and to manage potential parking impacts from our Imbil Office, Queensland Hydro has engaged Noosa-based firm RECOR to design and deliver additional public parking spaces along Lambert Hyne Drive, Imbil.
- Based on feedback from SRG and Focus Group members, we altered the design of the proposal to remove reserved parking signage.
- The work to construct the car parks will occur from Monday 3 February 2025 between 6am and 6pm and will be completed by late-February 2025 (weather and construction conditions permitting).
- On completion these additional parking spaces will be available for community use at any time and will also be used by Queensland Hydro Project vehicles when required.



Lambert Hyne Drive works area

Key takeaways

Thank you

info@qldhydro.com.au
ABN 81 661 444 515

qldhydro.com.au

This document was created on [date] and is
of a general nature and subject to change.

